

# All stainless steel process gauge open or solid front Model T5500 and T6500

According EN 837-1  
Nominal size 100 mm or 160 mm  
Accuracy: Class 1 (EN)



## Features

- Rugged stainless steel construction
- Socket and case welded
- Protection IP65/IP67
- Optional ATEX approved  $\text{CE} \text{Ex} \text{II} 2 \text{GD} \text{c}$
- Usable to full scale
- Overload protection 130 %
- Dry, liquid filled or liquid less (*PLUS!* gauge)
- Measuring system stainless steel or Monel

## Ranges

-1 ... 0 bar up to 0 ... 1000 bar  
-30 in. Hg ... 0 psi up to 0 ... 15.000 psi

## Applications

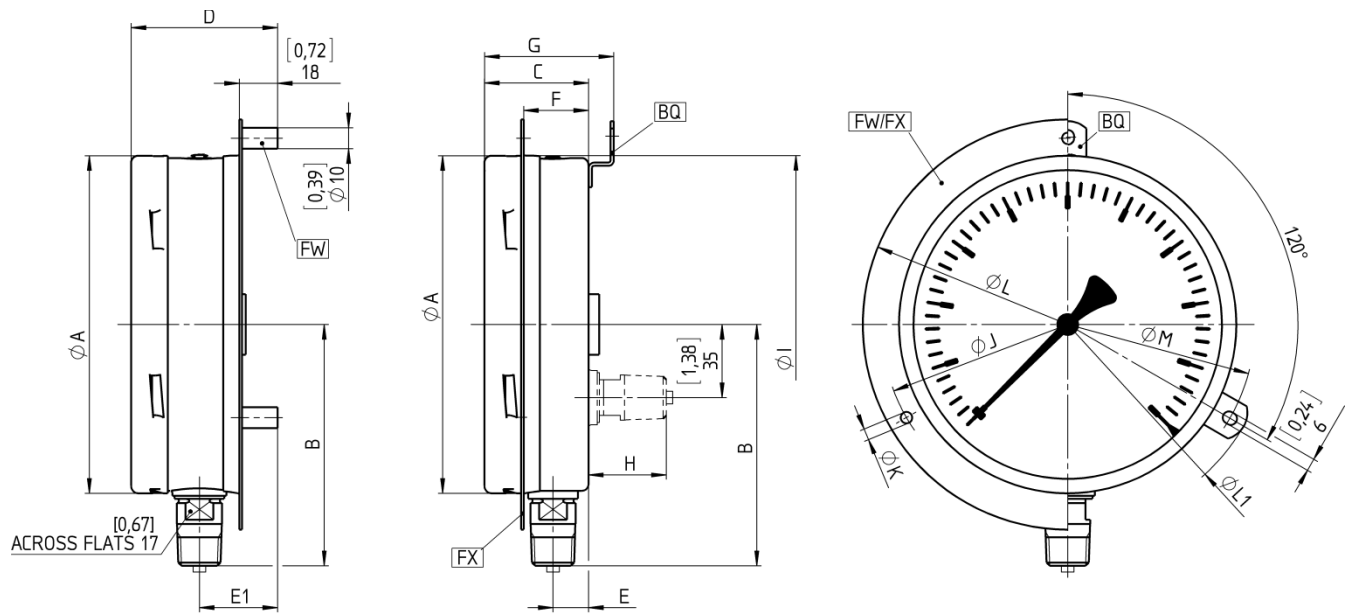
Chemical and petrochemical industry  
Machine and apparatus construction  
Food and beverage industry  
Pulp and paper industry



Technical specification	T5500		T6500	
	100	160	100	160
Dial size in mm	100	160	100	160
Construction	Open front cylindrical case with blow out disc at the back		Solid front safety pattern cylindrical case with blow out at the back	
Measuring principle	Bourdon tube			
Range in bar	0,6 1 1,6 2,5 4 6 10 16 25 40 60 100 160 250 400 600 1000			
Overpressure limit	-1/0 -1/0,6 -1/1,5 -1/3 -1/5 -1/9 -1/15 -1/24			
Pressure type	130 % F.S., short time Gauge, vacuum and compound			
Process connection	G 1/4 B male, G 1/2 B male, G 3/8 B male according EN 837-1, M20x1,5 male, R 1/2 male tapered (DIN 2999), 1/2" male straight (JIS, BSP), 3/8" male straight (JIS, BSP), 1/4 NPT male, 1/2 NPT male according ANSI/ASME B1.20.1, 9/16-18 UNF-2B Aminco (high pressure), Others on request (for pressure limitations see order information)			
Connection location	Lower, back		Lower only	
Material	Stainless steel 316L (1.4404), optional Monel 400 Stainless steel 316L (1.4404), optional Monel K-500 Stainless steel 304 (1.4301), optional 316L (1.4404) Instrument glass, optional safety glass or acrylic glass Aluminum, black markings on white background Aluminum, black, optional micrometer adjustment, red set hand or maximum pointer Stainless steel 304/303 (1.4301/1.4305)			
Pressure connection	Safety glass, optional acrylic glass			
Tube				
Case/bayonet ring				
Window				
Dial				
Pointer				
Movement				
Accuracy	Class 1 (1 % F.S.), optional 0,5 % F.S. for preferred ranges			
Permissible	-25 ... 60 °C Max. 200 °C (dry), max. 100 °C (liquid filled) -40 ... 60 °C Max. 0,3 % / 10 K			
Ambient temperature				
Medium temperature				
Storage temperature				
Effect				
Protection according EN 60 529/IEC 529	IP67, IP65 for T6500 dry execution			
Conformity according to RL 94/9/EC appendix X for mechanical equipment in potential hazardous areas	Optional, Marking $\text{CE} \text{Ex} \text{II} 2 \text{GD} \text{c} \text{IIC} \text{Tx}$ File no. 35134582 at notified body 0044, TÜV NORD CERT (only with safety glass or acrylic glass)			
Filling liquids	Glycerin, silicone, halocarbon, others on request Optional dampened movement (liquid less gauge), functions as liquid filled gauge ( <i>PLUS!</i> gauge)			
Mounting	Standard stem, optional flush or surface, others on request			
Weight dry/filled in kg	0,8/1,0	1,2/2,0	0,8/1,0	1,2/2,0
Accessories, options	Diaphragm seals, valves, gauges with integrated contacts (see data sheet G1.T5500-KF), gauges with integrated pressure transducer (see data sheet G1.T55E)			

## General dimensions in mm

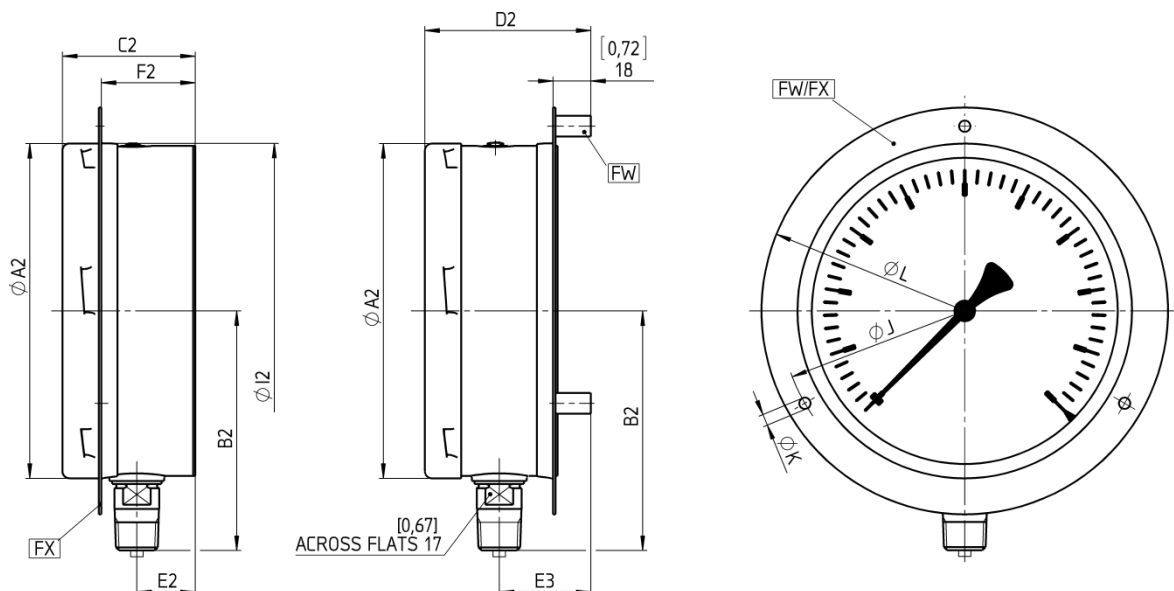
### T5500 open front with blow out compensation plug



NG	A	B	C	D	E	E1	F	G	H	I	J	K	L	L1	M
100 mm	[3,97] 101	[3,36] 85	[2,01] 51	[2,72] 69	[0,73] 18,5	[1,44] 36,5	[1,26] 32	[2,48] 63	[1,38] 35	[4,00] 102	[4,57] 116	[0,19] 4,8	[5,20] 132	[5,28] 134	[4,69] 119
160 mm	[6,35] 161	[4,54] 115	[1,96] 50	[2,76] 70	[0,67] 17	[1,47] 37	[1,22] 31	[2,43] 62	[1,46] 37	[6,36] 162	[7,01] 178	[0,22] 5,5	[7,72] 196	[7,64] 194	[7,05] 179

Rev. M

### T6500 solid front with blow out back wall



NG	A2	B2	C2	D2	E2	E3	F2	I2	J	K	L
100 mm	[3,97] 101	[3,36] 85	[2,38] 61	[2,91] 74	[1,02] 26	[1,55] 39	[1,63] 42	[4,00] 102	[4,57] 116	[0,19] 4,8	[5,20] 132
160 mm	[6,35] 161	[4,54] 115	[2,52] 64	[3,15] 80	[1,11] 28	[1,74] 44	[1,78] 45	[6,36] 162	[7,01] 178	[0,22] 5,5	[7,72] 196

Rev. M

### Order information

Size	Type	System material	Execution	Process connection	Connection orientation	Range	Engineering unit	Filling/Case material	Options
(100) 100 mm	T5500	(S) 316L (1.4404) ≤ 1000 bar	(D) Dry  (L) Liquid filled	(04) ½ NPT male <sup>1)</sup>	(L) Lower  (B) Back <sup>1)</sup>	-1/ 0 <sup>1)</sup> -1/ 1,5 -1/ 3 -1/ 5 -1/ 9 -1/ 15 -1/ 24  0/ 0,6 <sup>2)</sup> 0/ 1 <sup>1)</sup> 0/ 1,6 0/ 2,5 0/ 4 0/ 6 0/ 10 0/ 16 0/ 25 0/ 40 0/ 60 0/ 100 0/ 160 0/ 250 0/ 400 0/ 600 0/1000	(BAR)	(=) Standard no filling  (GV) Silicone  (GV3) Silicone 3 cst  (GR) Glycerin  (GX) Halocarbon <sup>1)</sup>  (LJ) Field fillable (only for execution D)  (YW) Case ma- terial 316L (1.4404)	(NH) Tagging wired  (CS) Dual scale (Outer scale is dominant)  (DA) Dial Marking  (TU) Throttle plug stainless steel  (6B) Cleaned for Oxygen service (not for T5500 (open front) acc. EN 837-1)  (6W) Cleaned free of oil and grease  (MP) Micrometer pointer  (PD) Acrylic glass  (SG) Safety glass  (BQ) Wall mounting brackets  (FX) Front flange  (FW) Back flange  (UF) U-clamp (not for T6500)  (AJ) Calibration 0,5 % F.S. (not for ranges < 1 bar (dry) or < 4 bar (liquid filled))  (LL) Liquid less gauges (Halocarbon filling not allowed)  (NZ) Liquid less gauges, silicon free (not for execution L)  (PR) Receiver gauge  (OS) Overload stop  (VS) Vacuum stop  (ATEX) ATEX approval  (C3) Material test report acc. to DIN EN 10204 3.1  (C4) Calibration certificate  (HY) Hydrostatic test 130%  (MQ) PMI test  Option listing starts with "X", followed by options separated by "=" Example: X=NH=SG=FW
(160) 160 mm	T6500	(P) Monel ≤ 1000 bar		(02) ¼ NPT male <sup>1)</sup>  (09) 9/16-18 UNF-2B Aminco  (13) G ¼ B male <sup>1)</sup>  (14) G 3/8 B male <sup>1)</sup>  (15) G ½ B male <sup>1)</sup>  (16) M20x1,5 male <sup>1)</sup>  (KQ) R½ male tapered DIN 2999 <sup>1)</sup>  (KN) ½" male straight (JIS, BSP) <sup>1)</sup>  (KP) 3/8" male straight (JIS, BSP) <sup>1)</sup>					
						<sup>1)</sup> not allowed with liquid less (LL or NS) option <sup>2)</sup> not allowed with execu- tion L or with liquid less (LL or NS) option			
				<sup>1)</sup> max. 1000 bar	<sup>1)</sup> not for type T6500		psi and others on request	<sup>1)</sup> not allowed in combination with liquid less (LL) option	

### Order example

Size	Type	System material	Execution	Process connection	Connection Orientation	Range	Engineering unit	Filling/Case material	Options
100	T5500	S	D	15	L	0/16	BAR	YW	NH