

44-2600 Series

Regulators - Pressure Reducing

D44261794X012

Specifications

For other materials or modifications, please consult TESCOM.

OPERATING PARAMETERS

Pressure rating per criteria of ANSI/ASME B31.3

Maximum Inlet Pressure

400 or 3500 psig / 27.6 or 241 bar

Outlet Pressure Ranges

0-12, 0-25, 0-50, 0-100, 0-150,
0-250 psig (400 psig inlet models only)
0-0.83, 0-1.7, 0-3.4, 0-6.9, 0-10.3,
0-17.2 bar (27.6 bar inlet models only)

Design Proof Pressure

150% of maximum rated

Leakage

Internal: Bubble-tight

External: Design to meet $\leq 2 \times 10^{-8}$ atm cc/sec He

Operating Temperature

-40°F to 165°F / -40°C to 74°C

Flow Capacity

3500 psig / 241 bar Inlet: $C_v = 0.06$

400 psig / 27.6 bar Inlet: $C_v = 0.15$

MEDIA CONTACT MATERIALS

Body

316 Stainless Steel

Bonnet

303 Stainless Steel

Diaphragm

316 Stainless Steel

Seat

Teflon®

Friction Sleeve (inner)

Teflon®

Remaining Parts

316 Stainless Steel

OTHER

Cleaning

CGA 4.1 AND ASTM G93

Weight

3 lbs / 1.4 kg

Teflon® is a registered trademark of E.I. du Pont de Nemours and Company.



TESCOM 44-2600 Series is a compact, extremely sensitive, high purity single-stage regulator for specialty, flammable and industrial gases with flows of less than 10 SCFM / 283 SLPM. Diffusion-resistant metal diaphragm seal ensures gas purity and integrity.

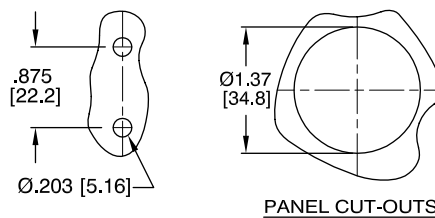
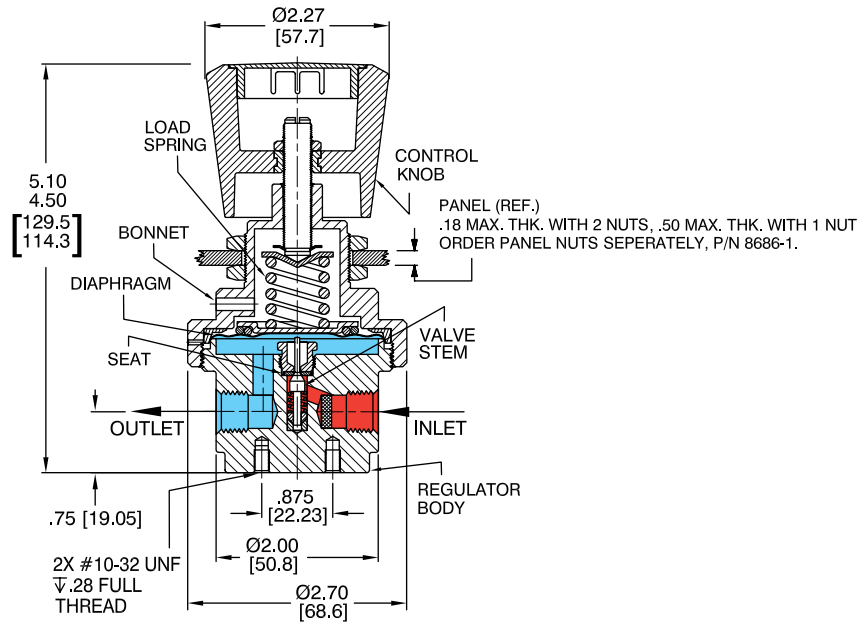
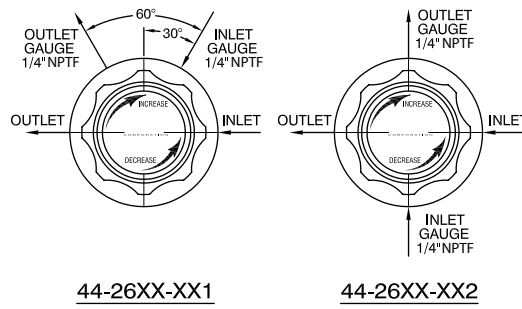
Applications

- Gas/Analyzer sampling systems
- Fuel cells
- Tissue and cell culture incubators
- Chromatograph flame detector fuel supply
- Excellent for low outlet and low differential pressure applications

Features and Benefits

- Features a large convoluted diaphragm for extreme sensitivity with minimum droop
- Repeatability: $\pm 0.5\%$ of outlet pressure range
- Metal-to-metal diaphragm to body seal
- Accuracy: $\pm 1\%$ of outlet pressure range
- Gauge ports are standard
- Dome loaded version is available
- $C_v = 0.02$ and $C_v = 0.24$ models are available
- NACE compliant designs are available

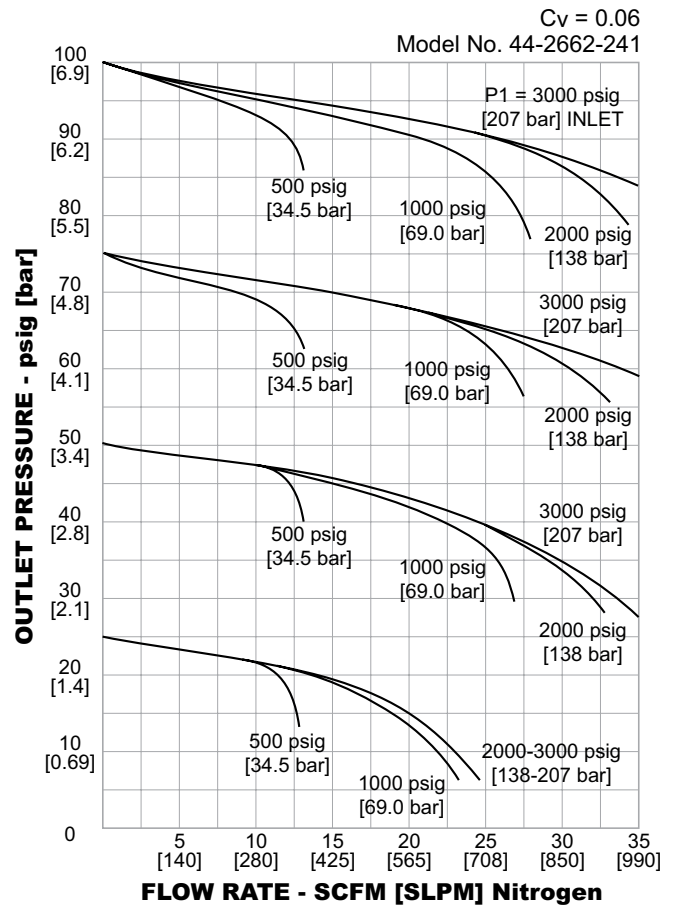
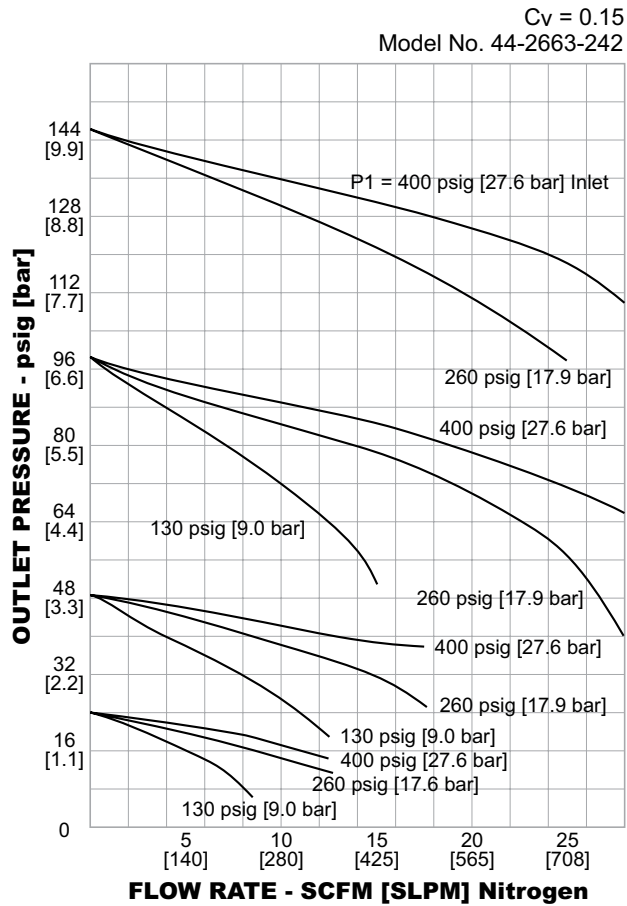
44-2600 Series Regulator Drawing



All dimensions are reference & nominal
Metric [millimeter] equivalents are in brackets

44-2600 Series Regulator Flow Charts

For more information on how to read flow curves, please refer to the Flow Curves and Calculations document (debul2007x012) in the ICS catalog or on www.ics-schneider.de



44-2600 Series Regulator Part Number Selector

Repair Kits, Accessories & Modifications may be available for this product. Please contact ICS for more information.

Example for selecting a part number:

BASIC SERIES	BODY MATERIAL	OUTLET PRESSURE RANGES	INLET AND OUTLET PORT TYPE	INLET AND OUTLET PORT SIZE	MAXIMUM INLET PRESSURE
44-26	6 – 316 Stainless Steel	L – 0-12 psig / 0-0.82 bar 0 – 0-25 psig / 0-1.7 bar 1 – 0-50 psig / 0-3.4 bar 2 – 0-100 psig / 0-6.9 bar 3 – 0-150 psig / 0-10.3 bar 4 – 0-250 psig / 0-17.2 bar*	2 – NPTF	4 – 1/4"	1 – 3500 psig / 241 bar 2 – 400 psig / 27.6 bar
			*Available for 400 psig / 27.6 bar maximum inlet pressure only.		



WARNING! Do not attempt to select, install, use or maintain this product until you have read and fully understood the Installation and **Operation Precautions**. ICS Safety