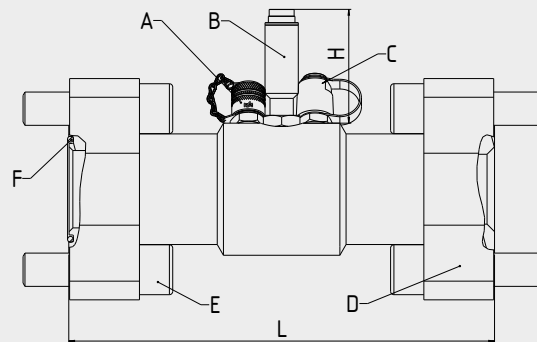
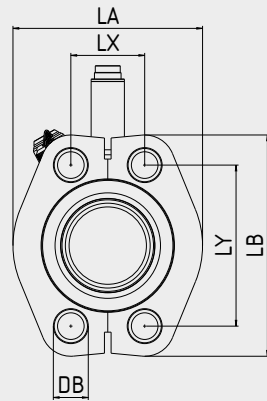


HySense® QT 3xx



A	MINIMESS® 1620 series p/T test point
B	HySense® RS series inductive sensor
C	MINIMESS® 1620 series test point
D	SAE flange halves
E	Socket cap screws
F	SAE seal (O-ring) ID 56.74 x 3.53 90 Shore A, NBR

General characteristics	
Fluid	Fuels, water, hydraulic fluids, transmission fluids, oil-in-water emulsions, water and glycol mixtures, brake fluid, Skydrol*
Flow range	45 ... 1000 L/min*
Output signal	Frequency, CANopen, 4 ... 20 mA
Response time	< 0.05 s
Viscosity range	1 ... 150 mm ² /s (cSt)*
Measuring accuracy	Up to ±0.5% of reading
Fluid temperature	-20 °C ... 100 °C*
Ambient temperature	-20 ... 85 °C
Turbine housing material	Stainless steel
Seal material	FKM*
IP degree of protection	IP67 (DIN EN 60529)

* More available upon request

Flow rate	Measuring range	Connection	L	LA	LB	Weight	H		
	L/min	SAE J518	mm	mm	mm	without flange	QT 300	QT 306	QT 310
1000 L/min	45 ... 1000	2" flange	256	113.8	133	Approx. 5400 g	62 mm	98 mm	

Flow rate	Max. operating pressure	Measuring accuracy
	bar	QT 300 ¹ QT 306 QT 310 ²
1000 L/min	420	±0.5% of reading

¹ Different if a constant calibration value is used; please refer to the technical data sheet

² Additionally ±0.1% of full scale

Part No. 3W XF-88-35.ZZZZ

Chemical compatibility

- W = 1** Hydraulic fluids, transmission fluids
- 3** Water, oil-in-water emulsion, water and glycol mixtures, liquids containing water such as HFA / HFC (available starting mid-2020)
- A** Skydrol (available starting mid-2020)

Sensor

- X = C** QT 306 CANopen, M12 electrical connector, 5-pin, ISDS
- I** QT 310 analog 4 ... 20 mA, M12 electrical connector, 4-pin, ISDS
- J** QT 310 analog 4 ... 20 mA, M16 electrical connector, 6-pin, ISDS
- K** QT 300 frequency, M12 electrical connector, 4-pin, ISDS
- V** QT 300 frequency, M16 electrical connector, 6-pin, ISDS

Calibration viscosity

- W = 1** → 30 mm²/s: **ZZZZ = 030**
- W = 3** → 2,5 mm²/s: **ZZZZ = V012**
- W = A** → 11 mm²/s: **ZZZZ = 011**

Included:

- Four 2" SAE flange halves, straight
- One SAE seal
- Eight DIN 912 socket cap screws



Pressure differential at 30 mm²/s

