

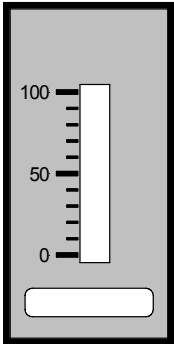
## Bargraph Indicator direct voltage, direct current

- Standard: bar or dot indication
- Allows to be placed side by side in grid and mosaics systems
- Mounting into panels with thickness up to 50 mm

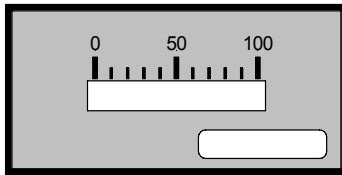
**48x24**

**72x24**

IBVO1.001.776B



IBHO1.001.776B

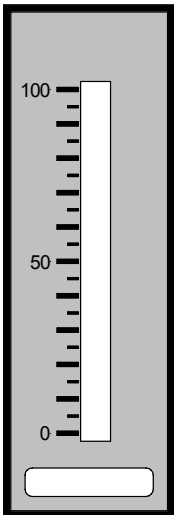


ORDER NUMBER OF TYPE

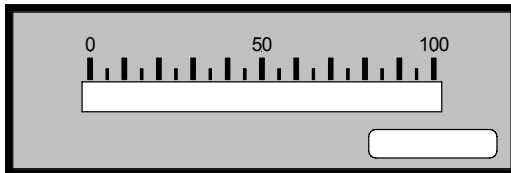
Power supply 24 VDC (48x24 vertically) **IBVO 1.001.776B**

Power supply 24 VDC (48x24 horizontally) **IBHO 1.001.776B**

IBVO2.001.576B



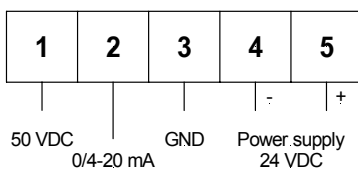
IBHO2.001.576B



Power supply 24 VDC (72x24 vertically) **IBVO 2.001.576B**

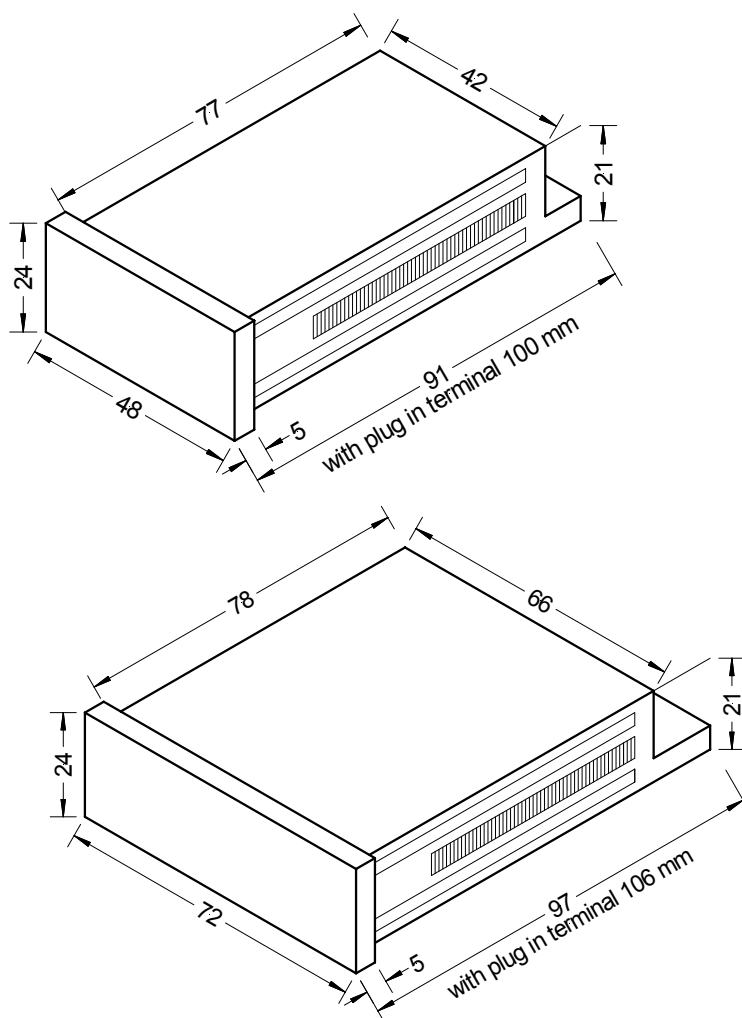
Power supply 24 VDC (72x24 horizontally) **IBHO 2.001.576B**

### Connection



# Technical data

<b>Dimensions</b>	Housing	72 x 24 x 106 mm, including screw terminal	
	Assembly cut out	68 <sup>+0.7</sup> x 22.2 <sup>+0.3</sup> mm	
	Housing	48 x 24 x 100 mm, including screw terminal	
	Assembly cut out	45.0 <sup>+0.6</sup> x 22.2 <sup>+0.3</sup> mm	
	Fastening	special quick plastic clamp proper to fix in wall thickness up to 50 mm	
(72x24) (48x24)	Housing material	PC/ABS-plastics blend, colour black, UL94V-0	
	Protective system	at the front IP40 connection IP00	
<b>Input</b>	Weight	approx. 80 g approx. 60 g	
	Connection	at the rear side via plug in terminal up to 1.5 mm <sup>2</sup>	
	Measuring range	0...50 V (U <sub>min</sub> =5 V, U <sub>max</sub> =60 V); 0/4...20 mA (I <sub>min</sub> =8 mA, I <sub>max</sub> =25 mA) all ranges are selectable via connection terminal / offset adjustment supported by offset potentiometer	
<b>Accuracy</b>	Input resistance	Ri with 50 V = 100 K $\Omega$ 20 mA = 100 $\Omega$	
	(72x24)	Resolution	20 digit
	(48x24)	Resolution	10 digit
		Measuring fault	+/- 1 digit
		Temperature drift	100 ppm/K
<b>Power unit</b>	Supply voltage	24 VDC +/-10 % galvanic insulated	
	Power consumption	approx. 1.5 VA	
<b>Indication</b>	Display	bar indication 20 digit red / optionally green	
	(48x24)	Display	bar indication 10 digit red / optionally green
<b>Ambient conditions</b>	Working temperature	0 up to + 60 °C	
	Storing temperature	-20 up to + 80 °C	
<b>Housing:</b>			



### CE-sign

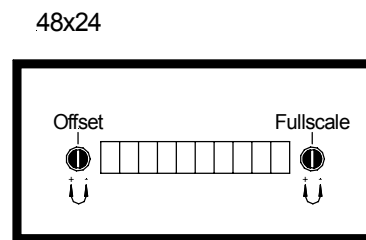
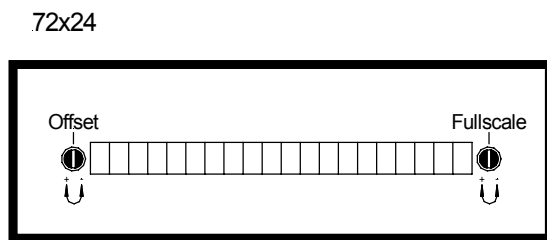
For unlimited use of the instrument within the directives for electromagnetic compatibility 89/336/EC analogue input wires have to be used with shielded cable and cable's shield connected to earth ground at one end only.

# Handling, connection diagrams

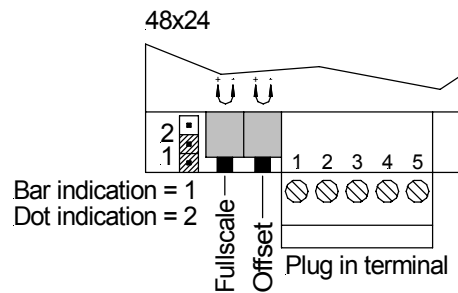
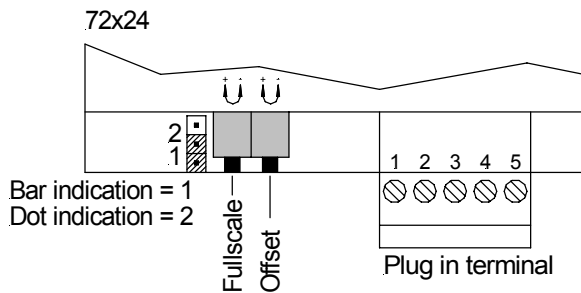
## Description:

1. Connect the instrument according to the wiring diagram and turn power on.
2. Setting of display value in the case of **IP40** and **IP54**: Detach the front pane with a small screwdriver leading between front panel and housing frame.
3. Set the desired offset value (input voltage/current) und adjust the desired indication value by means of the offset potentiometer.
4. Set the desired full scale value (input voltage/current) und adjust the desired indication value by means of the full scale potentiometer.
5. In order to achieve a full display a least tension of 5 V and/or least current of 8 mA is required at the measuring inputs.
6. Insert front pane cautiously again. (it only applies to IP40 and IP54)

## Setting options front side (IP40 and IP54)



## Setting options rear side (IP65)



## Connection diagrams

2-wire: 4-20 mA

3-wire: 0-20 mA  
4-20 mA

3-wire: 0-10 V/0-5 V  
1-6 V

