



IDS 214

Electronic Pressure Switch for Very High Pressure

Thinfilm Sensor

accuracy according to IEC 60770:
standard: 0.35 % FSO

Nominal pressure

from 0 ... 600 bar up to 0 ... 2 200 bar

Contacts

1, 2 or 4 independent PNP contacts,
freely configurable

Analogue output

2-wire: 4 ... 20 mA
3-wire: 4 ... 20 mA / 0 ... 10 V
others on request

Special characteristics

- ▶ indication of measured values
on a 4-digit LED display
- ▶ pressure sensor welded
- ▶ extremely robust and excellent long-
term stability

Optional versions



- ▶ adjustability of span and offset
(4 ... 20 mA / 3-wire)
- ▶ customer specific versions

The electronic pressure switch IDS 214 for very high pressure up to 2 200 bar has been designed especially for use in plant and machine engineering as well as in mobile hydraulics.

The IDS 214 has one 1 contact with standard version, this can optionally be upgraded up to four independent contacts.

Via the rotatable modul with an integrated 4-digit display the IDS 214 can be programmed easily and comfortably.

Preferred areas of use are

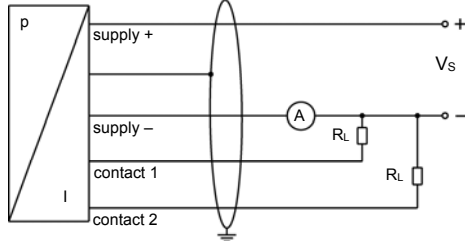
-  Plant and machine engineering
-  Commercial vehicles and
mobile hydraulics



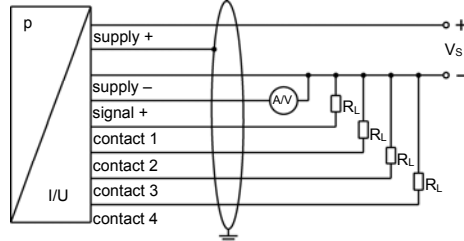
Input pressure range						
Nominal pressure gauge	[bar]	600 ¹	1000	1600	2000	2200
Overpressure	[bar]	800	1400	2200	2800	2800
¹ only available with pressure port G1/2" EN 837						
Contact ²						
Standard	1 PNP contact					
Options	2 independent PNP contacts 4 independent PNP contacts (possible with M12x1, 8-pin for 4 ... 20 mA/3-wire)					
Max. switching current	4 ... 20 mA / 2- and 3-wire: contact rating 125 mA, short-circuit resistant; $V_{switch} = V_S - 2V$ 0 ... 10 V / 3-wire: contact rating 125 mA, short-circuit resistant					
Accuracy of contacts ³	$\leq \pm 0.35\%$ FSO					
Repeatability	$\leq \pm 0.1\%$ FSO					
Switching frequency	max. 10 Hz					
Switching cycles	$> 100 \times 10^6$					
Delay time	0 ... 100 sec					
² max. 1 contact for 2-wire current signal with plug ISO 4400 no contact possible with 3-wire in combination with plug ISO 4400						
Analogue output (optionally) / Supply						
2-wire current signal	4 ... 20 mA / $V_S = 13 \dots 36 V_{DC}$ permissible load: $R_{max} = [(V_S - V_{Smin}) / 0.02 A] \Omega$ response time: < 10 msec					
3-wire current signal	4 ... 20 mA / $V_S = 19 \dots 30 V_{DC}$ adjustable (turn-down of span 1:5) ⁴ permissible load: $R_{max} = 500 \Omega$ response time: < 3 sec					
3-wire voltage signal	0 ... 10 V / $V_S = 15 \dots 36 V_{DC}$ permissible load: $R_{min} = 10 k\Omega$ response time: < 3 msec					
Without analogue output	$V_S = 15 \dots 36 V_{DC}$					
Accuracy ³	$\leq \pm 0.35\%$ FSO IEC 60770					
³ accuracy according to IEC 60770 – limit point adjustment (non-linearity, hysteresis, repeatability) ⁴ with turn-down of span the analogue signal is adjusted automatically to the new measuring range						
Thermal effects (Offset and Span)						
Thermal error	$\leq \pm 0.25\%$ FSO / 10 K					
in compensated range	$-20 \dots 85^\circ C$					
Permissible temperatures						
Permissible temperatures	medium: $-40 \dots 140^\circ C$ electronics / environment: $-25 \dots 85^\circ C$ storage: $-40 \dots 100^\circ C$					
Electrical protection						
Short-circuit protection	permanent					
Reverse polarity protection	no damage, but also no function					
Electromagnetic compatibility	emission and immunity according to EN 61326					
Mechanical stability						
Vibration	10 g RMS (25 ... 2000 Hz)					
Shock	100 g / 11 msec					
Materials						
Pressure port	stainless steel 1.4542 (17-4 PH)					
Housing	stainless steel 1.4404 (316 L)					
Display housing	PA 6.6, polycarbonate					
Seals (media wetted)	none (welded version)					
Diaphragm	stainless steel 1.4542 (17-4 PH)					
Media wetted parts	pressure port, diaphragm					
Miscellaneous						
Display	4-digit, red 7-segment-LED display, digit height 7 mm, range of indication -1999 ... +9999; accuracy $0.1\% \pm 1$ digit; digital damping 0.3 ... 30 sec (programmable); measured value update 0.0 ... 10 sec (programmable)					
Current consumption (without contacts)	2-wire signal output current: max. 25 mA 3-wire signal output current: approx. 45 mA 3-wire signal output voltage: approx. 7 mA + signal current					
Ingress protection	IP 65					
Installation position	any					
Weight	min. 200 g (depending on mechanical connection)					
Operational life	$p_N = 600$ bar: 100 million load cycles $p_N > 600$ bar: 10 million load cycles					
CE-conformity	EMC Directive: 2014/30/EU Pressure Equipment Directive: 2014/68/EU (module A)					

Wiring diagrams

2-wire-system (current)



3-wire-system (current / voltage)



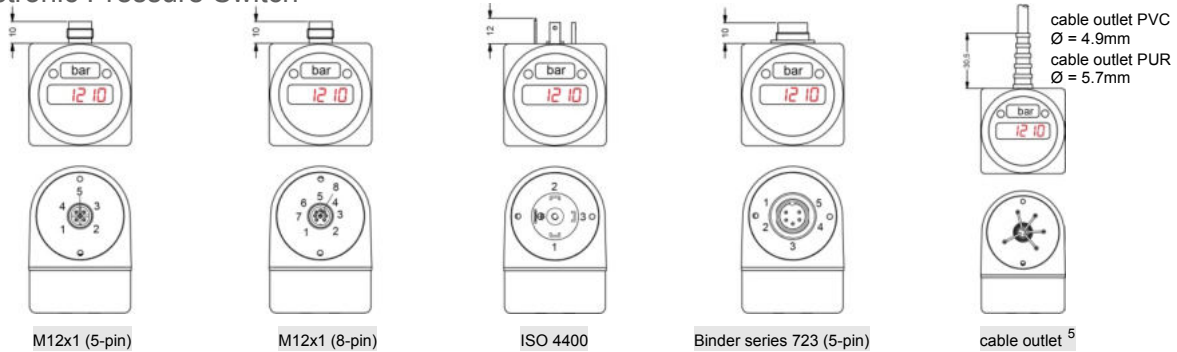
Pin configuration

Electrical connection	M12x1 plastic (5-pin)	M12x1 metal (5-pin)	M12x1 plastic (8-pin)	ISO 4400	Binder series 723 (5-pin)	cable colours (IEC 60757)
Supply +	1	1	1	1	1	wh (white)
Supply -	3	3	3	2	3	bn (brown)
Signal + (only 3-wire)	2	2	2	3	2	gn (green)
Contact 1	4	4	4	3	4	gy (grey)
Contact 2	5	5	5	-	5	pk (pink)
Contact 3	-	-	6	-	-	bu (blue)
Contact 4	-	-	7	-	-	rd (red)
Shield	via pressure port	plug housing/ pressure port	via pressure port	ground contact	plug housing/ pressure port	gnye (green-yellow)

214

Electrical connections (dimensions in mm)

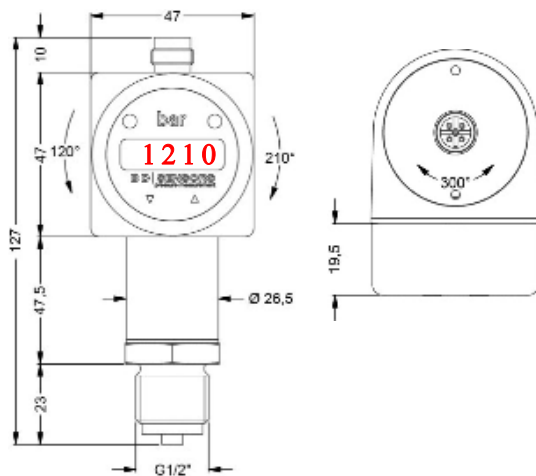
Electronic Pressure Switch



⁵ different cable types and lengths available; standard: 2 m PVC cable (without ventilation tube, permissible temperature: -5 ... 70 °C)

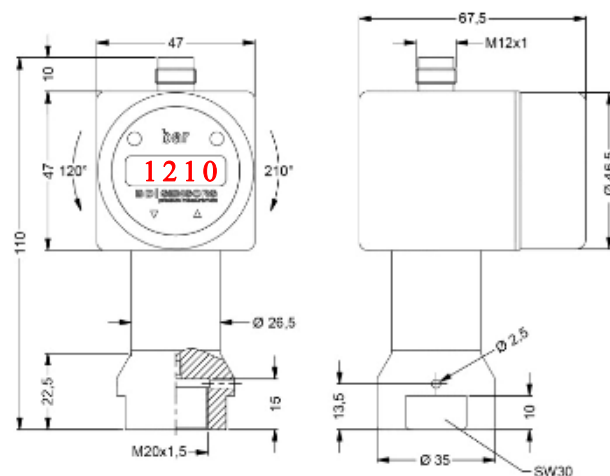
Mechanical connections (dimensions in mm)

standard



G1/2" EN 837

option



M20 x 1,5 internal thread

