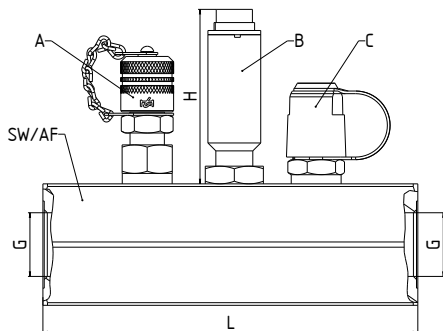


# HySense® QT 2xx



A	MINIMESS® 1620 series p/T test point
B	HySense® RS series inductive sensor
C	MINIMESS® 1620 series test point

General characteristics	
Fluid	Water, oil-in-water emulsion, water and glycol mixtures, and liquids containing water such as HFA / HFC*
Flow range	1 ... 600 L/min*
Output signal	Frequency, CANopen, 4 ... 20 mA
Response time	< 0.05 s
Viscosity range	1 ... 10 mm <sup>2</sup> /s (cSt)* Calibration viscosity: 2.5 mm <sup>2</sup> /s*
Measuring accuracy	Up ... ±0.5% of reading
Fluid temperature	-20 °C ... 100 °C*
Ambient temperature	-20 ... 85 °C
Turbine housing material	Stainless steel
Seal material	FKM*
IP degree of protection	IP67 (DIN EN 60529)

\* More available upon request

Flow rate	Measuring range L/min	G ISO 228	AF mm	L mm	Weight g	H		
						QT 200	QT 206	QT 210
10 L/min	1 ... 10	G 1/4	27	120	Approx. 795	62 mm	98 mm	
100 L/min	5 ... 100	G 3/4	46	142	Approx. 2040			
300 L/min	15 ... 300	G 1 1/4	60	181	Approx. 3400			
600 L/min	25 ... 600	G 1 1/2	65	185	Approx. 4100			

Flow rate	Max. operating pressure bar	Measuring accuracy		
		QT 200 <sup>1</sup>	QT 206	QT 210 <sup>2</sup>
10 L/min	420	±0.5% of reading		
100 L/min				
300 L/min				
600 L/min	350			

<sup>1</sup> Different if a constant calibration value is used; please refer to the technical data sheet

<sup>2</sup> Additionally ±0.1% of full scale

### Part No. 33XC-YY-35.V012G

#### Sensor

<b>X =</b>	<b>C</b> QT 206 CANopen, M12 electrical connector, 5-pin, ISDS
	<b>I</b> QT 210 analog 4 ... 20 mA, M12 electrical connector, 4-pin, ISDS
	<b>J</b> QT 210 analog 4 ... 20 mA, M16 electrical connector, 6-pin, ISDS
	<b>K</b> QT 200 frequency, M12 electrical connector, 4-pin, ISDS
	<b>V</b> QT 200 frequency, M16 electrical connector, 6-pin, ISDS

#### Thread / Flow range

<b>YY =</b>	<b>01</b> ISO 228-G 1/4	1 ... 10 L/min
	<b>77</b> ISO 228-G3/4	5 ... 100 L/min
	<b>78</b> ISO 228-G 1 1/4	15 ... 300 L/min
	<b>79</b> ISO 228-G1 1/2	25 ... 600 L/min

### Pressure differential at 2.5 mm<sup>2</sup>/s\*

