

## Pressure Measurement

Pressure transmitters

Single-range transmitters for general applications

1

### SITRANS P Compact for gauge and absolute pressure

#### Overview



The SITRANS P Compact pressure transmitter is designed for the special requirements of the food, pharmaceutical and biotechnology industries.

The use of high-grade materials guarantees compliance with hygiene regulations.

Particular value has been placed on a high surface quality. The system can be electropolished in addition.

A further important feature is the hygiene-based design of the process connection by means of various aseptic connections.

The completely welded stainless steel enclosure can be designed up to degree of protection IP67.

Using appropriate thermal decouplers, the SITRANS P Compact pressure transmitter can be used for process temperatures up to 200 °C (392 °F).

#### Benefits

- Measuring ranges from 0 to 160 mbar (0 to 2.32 psi) to 0 to 40 bar (0 to 580 psi)
- Linearity error including hysteresis < +0.2 % of the end value
- Piezo-resistive measurement system, vacuum-proof and overload-proof
- Hygiene-based design according to EHEDG, FDA and GMP recommendations
- Material and surface quality according to hygiene requirements
- Wetted parts made of stainless steel; completely welded
- Signal output 4 to 20 mA (0 to 20 mA as option)
- Stainless steel enclosure with degree of protection IP65 (IP67 as option)
- Process temperature up to 200 °C (392 °F)
- Explosion protection II 2G Ex [ib] IIC T6 to ATEX
- Easy and safe to clean

#### Application

The SITRANS P Compact pressure transmitter is designed for the special requirements of the food, pharmaceutical and biotechnology industries.

The use of high-grade materials guarantees compliance with hygiene regulations.

The SITRANS P Compact pressure transmitter is available in many versions. Exact adaptation of the pressure transmitter to conditions at the place of use is thus possible

#### Design

The electronics is potted to protect it against moisture, corrosive atmospheres and vibration.

#### Notes on operating the pressure transmitter

##### Compensation of internal atmospheric pressure

Compensation of the internal atmospheric pressure of the SITRANS P Compact pressure transmitters is performed as follows:

- in the plug versions by means of the screwed gland (IP65)
- in the field enclosures by means of an integral sintered filter (IP65) or a vented cable (IP67)
- in versions with cable outlet by means of a vented cable (IP67)

In the absolute pressure range there is no need for compensation with respect to atmospheric pressure.

**Note:** These degrees of protection are only achieved under the following conditions:

- if the pressure transmitter is installed correctly
- if the screwed glands are securely tightened
- if the cable diameters agree with the nominal diameters of the gaskets in the enclosure

**Note:** The integral EMC measures are only effective if the earth connection is made correctly.

##### CE marking

The CE marking of the pressure transmitter certifies compliance with the guidelines of the European Council (9/336/EC), the EMC law (13.11.1992), as well as the applicable generic standards.

Interference-free operation in systems and plants is achieved only if the specifications for shielding, earthing, cable routing and electrical isolation are observed during installation and assembly.

##### Hazardous areas

**Note:** Electrical equipment in hazardous areas must only be installed and operated by trained personnel.

Modifications to units and connections result in cancellation of the explosion protection and guarantee.

With intrinsically-safe circuits, make sure that equipotential bonding exists throughout the complete cabling inside and outside of the hazardous area. The limits specified in the ATEX approval must be observed.

## Pressure Measurement

### Pressure transmitters

#### Single-range transmitters for general applications

##### SITRANS P Compact for gauge and absolute pressure

1

### Function

The process pressure acts on a piezo-resistive semiconductor measuring bridge through a remote seal and a transmission liquid. The pressure transmitter converts the pressure values into a load-independent current.

A compensation network makes the output signal largely independent of the ambient temperature. As a result of a specially adapted remote seal connection with minimized volume, the influence of the process temperature on the output signal is greatly reduced compared to a conventional screw connection.

The pressure transmitters can be powered with a non-regulated DC voltage of 10 to 30 V. Output signals common to measuring technology are available.

### Technical specifications

#### Pressure transmitters for food, pharmaceuticals and biotechnology

##### Mode of operation

Measuring principle piezo-resistive

##### Input

Measured variable gauge or absolute pressure  
Measuring range 0 ... 160 mbar (0 ... 2.32 psi)  
...  
0 ... 40 bar (0 ... 580 psi)

##### Output

Output signal  
• 2-wire system 4 ... 20 mA  
• Three-wire system 0 ... 20 mA

##### Measuring accuracy

Acc. to IEC 60770-1  
Error in measurement at limit setting incl. hysteresis and reproducibility  $\leq 0.2\%$  of upper range value  
Adjustment accuracy  $\leq \pm 0.2\%$  of upper range value  
Step response time  $< 20$  ms  
Influence of ambient temperature  
On the enclosure  
• Zero point  $< 0.2\%$ /10 K of upper range value  
• Measuring span  $< 0.2\%$ /10 K of upper range value  
On the process connection (remote seals)  
Zero error (depends on design)  
• Flange remote seal  
- DN 25 / 1" 4.8 mbar/10 K (0.069 psi/10 K)  
- DN 32 / 1¼" 2.3 mbar/10 K (0.033 psi/10 K)  
- DN 40 / 1½" 1.6 mbar/10 K (0.023 psi/10 K)  
- DN 50 / 2" 0.6 mbar/10 K (0.009 psi/10 K)  
• Inline seal  
- DN 25 / 1" 9.5 mbar/10 K (0.14 psi/10 K)  
- DN 32 / 1¼" 4.1 mbar/10 K (0.06 psi/10 K)  
- DN 40 / 1½" 3.9 mbar/10 K (0.05 psi/10 K)  
- DN 50 / 2" 3.9 mbar/10 K (0.05 psi/10 K)

The zero error specified for the process connection should be considered as a guideline for a standard design. We will produce a detailed system calculation on request. Systems with reduced remote seal errors are available on request.

### Operating conditions

Installation conditions  
• Mounting position Any, vertical as standard  
Ambient conditions  
• Ambient temperature -10 ... +70 °C (14 ... 158 °F)  
• Storage temperature -10 ... +90 °C (14 ... 194 °F)  
• Process temperature Max. 200 °C (392 °F), depending on design  
Vacuum-resistant 0 mbar (0 psi) absolute at max. 50 °C. Higher process temperatures on request.  
• Degree of protection (to EN 60529) IP65, optional IP67  
• Electromagnetic Compatibility  
- Emitted interference To EN 50081 Part 1, issue 1993 (residential and industrial areas). The unit has no own emissions.  
- Noise immunity to EN 50082 Part 2, issue March 1995 (industrial areas)

### Design

Weight (without remote seal)  
• Field enclosure  $\approx 460$  G ( $\approx 1.01$  lb)  
• Enclosure with plug  $\approx 200$  g ( $\approx 0.44$  lb)  
Enclosure  
• Designs  
• Field enclosure IP65 or IP67, with screwed gland  
• Angled plug DIN 43650, IP65  
• Cable connection, IP67  
• Device plug M12, IP65  
• Material Stainless steel, mat. no. 1.4404/316L/1.4305  
Material of union nut Polyamide (with electrical connection using plug or cable)  
Electronics unit potted with silicone  
Internal ventilation for measuring ranges  $< 16$  bar ( $< 232$  psi), through enclosure thread or connection cable depending on design  
Process connection  
• Versions See ordering data  
• Material of coupling Stainless steel, mat. no. 1.4404/316L

### Power supply

Terminal voltage on transmitter 10 ... 30 V DC  
Rated voltage 24 V DC

### Certificates and approvals

Classification according to pressure equipment directive (PED 2014/68/EU)  
• For 7MF8010-1... (with diaphragm seal) For gases of fluid group 1 and liquids of fluid group 1; complies with requirements of article 4, paragraph 3 (sound engineering practice)  
• For 7MF8010-2... (with inline seal) For gases of fluid group 1 and liquids of fluid group 1; complies with the requirements of article 4, paragraph 1 (appendix 1); assigned to category III, conformity evaluation module H by the TÜV Nord  
Explosion protection  
• Intrinsic safety "i"  
- Marking TÜV 03 ATEX 2099 X  
Ex II 2G Ex ib IIC T6



**Pressure Measurement**

Pressure transmitters

Single-range transmitters for general applications

**SITRANS P Compact for gauge and absolute pressure**

1

| Selection and Ordering data  |  | Article No.    | Ord. code | Selection and Ordering data   |  | Article No.       | Ord. code |
|--|--|----------------|-----------|---|--|-------------------|-----------|
| <b>SITRANS P Compact pressure transmitters for pressure and absolute pressure with diaphragm flush at front</b>          |  | 7 MF 8 0 1 0 - |           | <b>SITRANS P Compact pressure transmitters for pressure and absolute pressure with diaphragm flush at front</b>   |  | 7 MF 8 0 1 0 -    |           |
| 2-wire system<br>Process temperature up to 140 °C (284 °F)<br>Accuracy: 0.2 % of upper range value<br>Output 4 ... 20 mA |  | 1              |           | 2-wire system<br>Process temperature up to 140 °C (284 °F)<br>Accuracy: 0.2 % of upper range value<br>Output 4 ... 20 mA  |  | 1                 |           |
| <b>Enclosure design (stainless steel mat. No. 1.4404/316L) / electr. connection</b>                                      |  |                |           | <b>Measured range</b>   |  |                   |           |
| Enclosure with angled plug to DIN 43650, IP65  |  | 1              |           | <b>Overload pressure</b>  |  |                   |           |
| Enclosure with device plug M12, IP65, union nut made of polyamide  |  | 2              |           | (continued)   |  |                   |           |
| Enclosure with device plug M12, IP65, union nut made of stainless steel  |  | 3              |           | -1 ... +9 bar<br>(-14.5 ... +130.5 psi)   |  | GA                |           |
| Stainless steel field enclosure (small) with cable gland, IP65   |  | 4              |           | -1 ... +15 bar<br>(-14.5 ... +217.6 psi)  |  | GB                |           |
| Stainless steel field enclosure (small) with cable gland, IP67   |  | 5              |           | 0 ... 1 bar a<br>(0 ... 14.5 psi a)   |  | HA                |           |
| Internal ventilation for measuring ranges < 16 bar (< 232 psi)   |  |                |           | 0 ... 1.6 bar a<br>(0 ... 23.2 psi a)   |  | HB                |           |
| <b>Measured range</b>  |  |                |           | 0 ... 2.5 bar a<br>(0 ... 36.3 psi a)   |  | HC                |           |
| <b>Overload pressure</b>   |  |                |           | 0 ... 4 bar a<br>(0 ... 58 psi a)   |  | HD                |           |
| 0 ... 160 mbar<br>(0 ... 2.32 psi)   |  |                | BB        | 0 ... 6 bar a<br>(0 ... 87 psi a)   |  | HE                |           |
| 0 ... 250 mbar<br>(0 ... 3.63 psi)   |  |                | BC        | 0 ... 10 bar a<br>(0 ... 145 psi a)   |  | JA                |           |
| 0 ... 400 mbar<br>(0 ... 5.8 psi)  |  |                | BD        | Special version<br>(add Order code and plain text)  |  | Z A               | P 1 Y     |
| 0 ... 600 mbar<br>(0 ... 8.7 psi)  |  |                | BE        | <b>Explosion protection</b>   |  |                   |           |
| 0 ... 1 bar<br>(0 ... 14.5 psi)  |  |                | CA        | without   |  |                   | 1         |
| 0 ... 1.6 bar<br>(0 ... 23.2 psi)  |  |                | CB        | with, to ATEX 100a, II 2 G, Ex ib IIC T6  |  |                   | 2         |
| 0 ... 2.5 bar<br>(0 ... 36.3 psi)  |  |                | CC        | <b>Further designs</b>  |  | Order code        |           |
| 0 ... 4 bar<br>(0 ... 58 psi)  |  |                | CD        | Please add "-Z" to Article No. and specify Order code   |  |                   |           |
| 0 ... 6 bar<br>(0 ... 87 psi)  |  |                | CE        | <b>Hygiene version</b>  |  | P01               |           |
| 0 ... 10 bar<br>(0 ... 145 psi)  |  |                | DA        | Roughness of process connection:<br>Foil R <sub>a</sub> < 0.8 μm (3.15·10 <sup>-8</sup> inch);<br>Welded seams R <sub>a</sub> < 1.5 μm<br>(5.9·10 <sup>-8</sup> inch) |  | K01               |           |
| 0 ... 16 bar<br>(0 ... 232 psi)  |  |                | DB        | <b>Integral cooling element</b>   |  |                   |           |
| 0 ... 25 bar<br>(0 ... 363 psi)  |  |                | DC        | Process temperature max. 200 °C<br>(392 °F) instead of 140 °C (284 °F)  |  |                   |           |
| 0 ... 40 bar<br>(0 ... 580 psi)  |  |                | DD        | <b>Connections for pipe</b>   |  | R01<br>R02<br>R03 |           |
| -160 ... 0 mbar<br>(-2.32 ... 0 psi)   |  |                | EB        | Pipes to DIN 11850  |  |                   |           |
| -250 ... 0 bar<br>(-3.73 ... 0 psi)  |  |                | EC        | ISO pipes to DIN 2463   |  |                   |           |
| -400 ... 0 bar<br>(-5.8 ... 0 psi)   |  |                | ED        | Pipes to O. D. Tubing "BS 4825 Part 1"  |  |                   |           |
| -600 ... 0 bar<br>(-8.7 ... 0 psi)   |  |                | EE        | <b>Certificates</b>   |  | C11<br>C12<br>C17 |           |
| -1 ... 0 bar<br>(-14.5 ... 0 psi)  |  |                | FA        | Quality test certificate, 5-point factory calibration (IEC 60770-2)   |  | C18               |           |
| -1 ... 0.6 bar<br>(-14.5 ... 8.7 psi)  |  |                | FB        | Inspection certificate to EN 10204-3.1  |  | C19               |           |
| -1 ... 1.5 bar<br>(-14.5 ... 21.8 psi)   |  |                | FC        | Use of FDA-listed remote seal filling liquids certified by factory certificate according to EN 10204-2.2  |  |                   |           |
| -1 ... 3 bar<br>(-14.5 ... 43.5 psi)   |  |                | FD        | Roughness depth measurement R <sub>a</sub> certified by factory certificate according to EN 10204-3.1   |  |                   |           |
| -1 ... 5 bar<br>(-14.5 ... 72.5 psi)   |  |                | FE        | Certification to EHEDG for inline seals with aseptic screwed gland to DIN 11864   |  |                   |           |

## Pressure Measurement

Pressure transmitters

Single-range transmitters for general applications

1

### SITRANS P Compact for gauge and absolute pressure

#### Selection and Ordering data

**SITRANS P Compact pressure transmitters for pressure and absolute pressure with inline seal**  **7MF8010 -**

2-wire system  
Process temperature up to 140 °C (284 °F)  
Accuracy: 0.2 % of upper range value  
Output 4 ... 20 mA

 Click on the Article No. for the online configuration in the PIA Life Cycle Portal.

#### Inline seal (screwed gland at both ends) with quick-release clamps

Milk pipe union to DIN 11851 with threaded socket

- DN 25
- DN 32
- DN 40
- DN 50
- DN 65

Clamp connection to DIN 32676

- DN 25
- DN 32
- DN 40
- DN 50
- DN 65

Clamp connection to ISO 2852<sup>1)</sup>

- 1 inch
- 1½ inch
- 2 inch
- 2½ inch

Special version  
(add Order code and plain text)

#### Filling liquid

Food oil, FDA-listed

Special version  
(add Order code and plain text)

#### Output signal

4 ... 20 mA

Special version  
(add Order code and plain text)

<sup>1)</sup> Please note the internal diameter of the pipe. Please specify pipe classes (see "Further designs")

Article No. Ord. code

|           |  |       |
|-----------|--|-------|
| 7MF8010 - |  |       |
| 2         |  |       |
| AD        |  |       |
| AE        |  |       |
| AF        |  |       |
| AG        |  |       |
| AH        |  |       |
| CD        |  |       |
| CE        |  |       |
| CF        |  |       |
| CG        |  |       |
| CH        |  |       |
| DM        |  |       |
| DN        |  |       |
| DP        |  |       |
| DQ        |  |       |
| ZA        |  | J 1 Y |
| 3         |  |       |
| 9         |  | L 1 Y |
| 1         |  |       |
| 9         |  | M 1 Y |

#### Selection and Ordering data

**SITRANS P Compact pressure transmitters for pressure and absolute pressure with inline seal**  **7MF8010 -**

2-wire system  
Process temperature up to 140 °C (284 °F)  
Accuracy: 0.2 % of upper range value  
Output 4 ... 20 mA

#### Inline seal with aseptic connection

Aseptic screwed gland to DIN 11864-1, form A with threaded socket

- 1 inch
- 1½ inch
- 2 inch

QM  
QN  
QP

Aseptic screwed NEUMO with threaded socket<sup>1)</sup>

- DN 25
- DN 32
- DN 40
- DN 50
- DN 65

SD  
SE  
SF  
SG  
SH

Aseptic screwed NEUMO with clamp connection, form R<sup>1)</sup>

- DN 25
- DN 32
- DN 40
- DN 50

TD  
TE  
TF  
TG

Aseptic screwed gland SÜDMO with threaded socket W 501<sup>1)</sup>

- 1 inch
- 1½ inch
- 2 inch

VM  
VN  
VP

Aseptic screwed gland SÜDMO with clamp connection W 601<sup>1)</sup>

- 1 inch
- 1½ inch
- 2 inch

WM  
WN  
WP  
ZA

Special version  
(add Order code and plain text)

J 1 Y

#### Filling liquid

Food oil, FDA-listed

Medicinal white oil

Special version  
(add Order code and plain text)

3  
2  
9

L 1 Y

#### Output signal

4 ... 20 mA

Special version  
(add Order code and plain text)

1  
9

M 1 Y

<sup>1)</sup> Please specify as well: Connections for pipes: R01, R02 or R03, see table "Further designs" on next page

**Pressure Measurement**

Pressure transmitters

Single-range transmitters for general applications

**SITRANS P Compact for gauge and absolute pressure**

1

| Selection and Ordering data  |                       | Article No.    | Ord. code | Selection and Ordering data  |                         | Article No.    | Ord. code   |
|--|-----------------------|----------------|-----------|--|-------------------------|----------------|-------------|
| <b>SITRANS P Compact pressure transmitters for pressure and absolute pressure with inline seal</b>                       |                       | 7 MF 8 0 1 0 - |           | <b>SITRANS P Compact pressure transmitters for pressure and absolute pressure with inline seal</b>   |                         | 7 MF 8 0 1 0 - |             |
| 2-wire system<br>Process temperature up to 140 °C (284 °F)<br>Accuracy: 0.2 % of upper range value<br>Output 4 ... 20 mA |                       | 2              |           | 2-wire system<br>Process temperature up to 140 °C (284 °F)<br>Accuracy: 0.2 % of upper range value<br>Output 4 ... 20 mA   |                         | 2              |             |
| <b>Enclosure design (stainless steel mat. No. 1.4404/316L) / electr. connection</b>                                      |                       |                |           | <b>Measured range    Overload pressure</b><br>(continued)  |                         |                |             |
| Enclosure with angled plug to DIN 43650, IP65, union nut made of polyamide   |                       |                | 1         | -1 ... 9 bar<br>(-14.5 ... 130.5 psi)  | 60 bar<br>(870 psi)     |                | GA          |
| Enclosure with device plug M12, IP65, union nut made of polyamide  |                       |                | 2         | -1 ... 15 bar<br>(-14.5 ... 217.6 psi)   | 60 bar<br>(870 psi)     |                | GB          |
| Enclosure with device plug M12, IP65, union nut made of stainless steel  |                       |                | 3         | 0 ... 1 bar a<br>(0 ... 14.5 psi a)  | 3 bar a<br>(43.5 psi a) |                | HA          |
| Stainless steel field enclosure (small) with cable gland, IP65   |                       |                | 4         | 0 ... 1.6 bar a<br>(0 ... 23.2 psi a)  | 10 bar<br>(145 psi)     |                | HB          |
| Stainless steel field enclosure (small) with cable gland, IP67   |                       |                | 5         | 0 ... 2.5 bar a<br>(0 ... 36.3 psi a)  | 10 bar a<br>(145 psi a) |                | HC          |
| Internal ventilation for measuring ranges < 16 bar (< 232 psi)   |                       |                |           | 0 ... 4 bar a<br>(0 ... 58 psi a)  | 10 bar a<br>(145 psi a) |                | HD          |
| <b>Measured range    Overload pressure</b>   |                       |                |           | 0 ... 6 bar a<br>(0 ... 87 psi a)  | 60 bar a<br>(870 psi a) |                | HE          |
| 0 ... 160 mbar<br>(0 ... 2.32 psi)   | 1 bar<br>(14.5 psi)   |                | BB        | 0 ... 10 bar a<br>(0 ... 145 psi a)  | 60 bar a<br>(870 psi a) |                | JA          |
| 0 ... 250 mbar<br>(0 ... 3.63 psi)   | 1 bar<br>(14.5 psi)   |                | BC        | Special version<br>(add Order code and plain text)   |                         |                | ZA    P 1 Y |
| 0 ... 400 mbar<br>(0 ... 5.8 psi)  | 3 bar<br>(43.5 psi)   |                | BD        | <b>Explosion protection</b>  |                         |                |             |
| 0 ... 600 mbar<br>(0 ... 8.7 psi)  | 3 bar<br>(43.5 psi)   |                | BE        | without  |                         |                | 1           |
| 0 ... 1 bar<br>(0 ... 14.5 psi)  | 3 bar<br>(43.5 psi)   |                | CA        | with, to ATEX 100a, II 2 G, Ex ib IIC T6   |                         |                | 2           |
| 0 ... 1.6 bar<br>(0 ... 23.2 psi)  | 10 bar<br>(145 psi)   |                | CB        | <b>Further designs</b>   | Order code              |                |             |
| 0 ... 2.5 bar<br>(0 ... 36.3 psi)  | 10 bar<br>(145 psi)   |                | CC        | Please add "-Z" to Article No. and specify Order code  |                         |                |             |
| 0 ... 4 bar<br>(0 ... 58 psi)  | 20 bar<br>(290 psi)   |                | CD        | <b>Hygiene version</b>   | P01                     |                |             |
| 0 ... 6 bar<br>(0 ... 87 psi)  | 60 bar<br>(870 psi)   |                | CE        | Roughness of process connection:<br>Foil R <sub>a</sub> < 0.8 µm (3.15·10 <sup>-8</sup> inch);<br>Welded seams R <sub>a</sub> < 1.5 µm (5.9·10 <sup>-8</sup> inch) |                         |                |             |
| 0 ... 10 bar<br>(0 ... 145 psi)  | 60 bar<br>(870 psi)   |                | DA        | <b>Integral cooling element</b>  | K01                     |                |             |
| 0 ... 16 bar<br>(0 ... 232 psi)  | 60 bar<br>(870 psi)   |                | DB        | Process temperature max. 200 °C (392 °F) instead of 140 °C (284 °F)  |                         |                |             |
| 0 ... 25 bar<br>(0 ... 363 psi)  | 60 bar<br>(870 psi)   |                | DC        | <b>Connections for pipe</b>  |                         |                |             |
| 0 ... 40 bar<br>(0 ... 580 psi)  | 100 bar<br>(1450 psi) |                | DD        | Pipes to DIN 11850   | R01                     |                |             |
| -160 ... 0 mbar<br>(-2.32 ... 0 psi)   | 1 bar<br>(14.5 psi)   |                | EB        | ISO pipes to ISO 2463  | R02                     |                |             |
| -250 ... 0 bar<br>(-3.73 ... 0 psi)  | 1 bar<br>(14.5 psi)   |                | EC        | Pipes to O. D. Tubing "BS 4825 Part 1"   | R03                     |                |             |
| -400 ... 0 bar<br>(-5.8 ... 0 psi)   | 3 bar<br>(43.5 psi)   |                | ED        | <b>Certificates</b>  |                         |                |             |
| -600 ... 0 bar<br>(-8.7 ... 0 psi)   | 3 bar<br>(43.5 psi)   |                | EE        | Quality test certificate, 5-point factory calibration (IEC 60770-2)  | C11                     |                |             |
| -1 ... 0 bar<br>(-14.5 ... 0 psi)  | 3 bar<br>(43.5 psi)   |                | FA        | Inspection certificate to EN 10204-3.1   | C12                     |                |             |
| -1 ... 0.6 bar<br>(-14.5 ... 8.7 psi)  | 10 bar<br>(145 psi)   |                | FB        | Use of FDA-listed remote seal filling liquids certified by factory certificate according to EN 10204-2.2   | C17                     |                |             |
| -1 ... 1.5 bar<br>(-14.5 ... 21.8 psi)   | 10 bar<br>(145 psi)   |                | FC        | Roughness depth measurement R <sub>a</sub> certified by factory certificate according to EN 10204-3.1  | C18                     |                |             |
| -1 ... 3 bar<br>(-14.5 ... 43.5 psi)   | 20 bar<br>(290 psi)   |                | FD        | Certification to EHEDG for inline seals with aseptic screwed gland to DIN 11864  | C19                     |                |             |
| -1 ... 5 bar<br>(-14.5 ... 72.5 psi)   | 20 bar<br>(290 psi)   |                | FE        |  |                         |                |             |

## Pressure Measurement

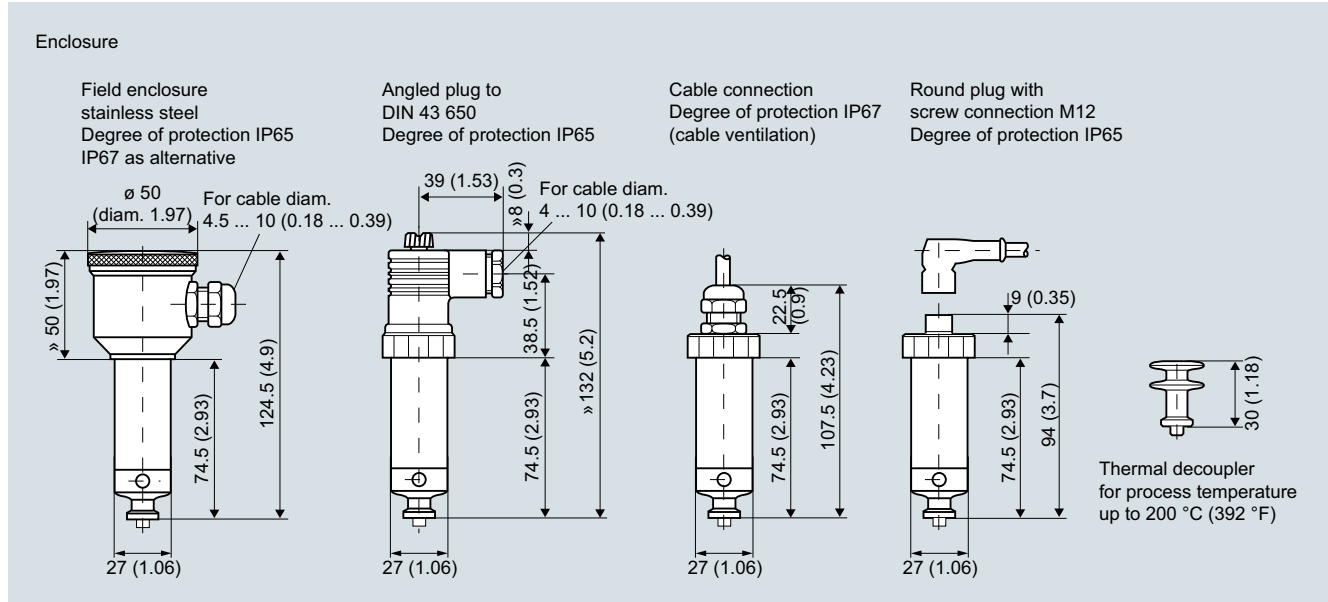
Pressure transmitters

Single-range transmitters for general applications

1

### SITRANS P Compact for gauge and absolute pressure

#### Dimensional drawings



SITRANS P Compact, dimenclosureensions in mm (inch)

#### Process connections

Diaphragm seal with quick-release clamp

**Milk pipe union to DIN 11851 with slotted union nut**

| DN | PN | H<br>mm (inch) | G             |
|----|----|----------------|---------------|
| 25 | 40 | 24 (0.95)      | Rd. 52 x 1/6" |
| 32 | 40 | 24 (0.95)      | Rd. 58 x 1/6" |
| 40 | 40 | 24 (0.95)      | Rd. 65 x 1/6" |
| 50 | 25 | 25.1 (0.99)    | Rd. 78 x 1/6" |
| 65 | 25 | 28.6 (1.13)    | Rd. 95 x 1/6" |

**Milk pipe union to DIN 11851 with threaded socket**

| DN | PN | H<br>mm (inch) | G             |
|----|----|----------------|---------------|
| 25 | 40 | -              | Rd. 52 x 1/6" |
| 32 | 40 | 20 (0.79)      | Rd. 58 x 1/6" |
| 40 | 40 | 20 (0.79)      | Rd. 65 x 1/6" |
| 50 | 25 | 20 (0.79)      | Rd. 78 x 1/6" |
| 65 | 25 | 22 (0.87)      | Rd. 95 x 1/6" |

**Clamp connection to DIN 32676**

| DN | PN | H<br>mm (inch) | D<br>mm (inch) |
|----|----|----------------|----------------|
| 25 | 16 | 14 (0.55)      | 50.5 (2)       |
| 40 | 16 | 14 (0.55)      | 50.5 (2)       |
| 50 | 16 | 14 (0.55)      | 64 (2.52)      |

**Clamp connection to ISO 2852**

| DN  | PN | H<br>mm (inch) | D<br>mm (inch) |
|-----|----|----------------|----------------|
| 1"  | 16 | 14 (0.55)      | 50.5 (2)       |
| 1½" | 16 | 12 (0.47)      | 50.5 (2)       |
| 2"  | 16 | 14 (0.55)      | 64 (2.52)      |
| 2½" | 16 | 14 (0.55)      | 77.5 (3.05)    |

**IDF standard with slotted union nut**

| DN  | PN | H<br>mm (inch) | G inch<br>(IDF thread) |
|-----|----|----------------|------------------------|
| 1"  | 40 | 21 (0.83)      | 1"                     |
| 1½" | 40 | 13.5 (0.53)    | 1½"                    |
| 2"  | 25 | 15 (0.59)      | 2"                     |

**IDF standard with threaded socket**

| DN  | PN | H<br>mm (inch) | G inch<br>(IDF thread) |
|-----|----|----------------|------------------------|
| 1"  | 40 | 21 (0.83)      | 1"                     |
| 1½" | 40 | 13.5 (0.53)    | 1½"                    |
| 2"  | 25 | 15 (0.59)      | 2"                     |

**SMS standard with slotted union nut**

| DN  | PN | H<br>mm (inch) | G            |
|-----|----|----------------|--------------|
| 1"  | 40 | 16 (0.63)      | Rd 40 x 1.6" |
| 1½" | 40 | 16 (0.63)      | Rd 60 x 1.6" |
| 2"  | 25 | 16 (0.63)      | Rd 70 x 1.6" |

**SMS standard with threaded socket**

| DN  | PN | H<br>mm (inch) | G            |
|-----|----|----------------|--------------|
| 1"  | 40 | 16 (0.63)      | Rd 40 x 1.6" |
| 1½" | 40 | 20 (0.79)      | Rd 60 x 1.6" |
| 2"  | 25 | 20 (0.79)      | Rd 70 x 1.6" |

**DRD flange, without welding-type flange**

| DN | PN | H<br>mm (inch) | D<br>mm (inch) |
|----|----|----------------|----------------|
| 50 | 40 | 16.7 (0.66)    | 65.5 (2.58)    |

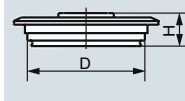
## Pressure Measurement

Pressure transmitters  
Single-range transmitters for general applications

### SITRANS P Compact for gauge and absolute pressure

1

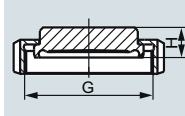
#### Varivent connection



| DN            | PN    | H<br>mm (inch) | D<br>mm (inch) |
|---------------|-------|----------------|----------------|
| 25            | 25    | 19 (0.75)      | 50 (1.97)      |
| 40 ...<br>125 | 25/10 | 19 (0.75)      | 68 (2.68)      |

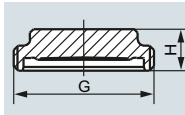
Diaphragm seal with aseptic connection

#### Aseptic screwed gland to DIN 11864-1, form A, with slotted union nut



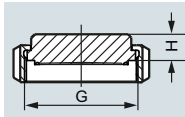
| DN  | PN | H<br>mm (inch) | G            |
|-----|----|----------------|--------------|
| 1"  | 40 | 20 (0.79)      | Rd 52 x 1/6" |
| 1½" | 40 | 20 (0.79)      | Rd 58 x 1/6" |
| 2"  | 25 | 20 (0.79)      | Rd 65 x 1/6" |
| 2½" | 25 | 20 (0.79)      | Rd 78 x 1/6" |

#### Aseptic screwed gland to DIN 11864-1, form A, with threaded socket



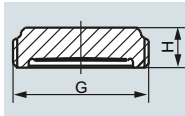
| DN  | PN | H<br>mm (inch) | G            |
|-----|----|----------------|--------------|
| 1"  | 40 | 15 (0.59)      | Rd 52 x 1/6" |
| 1½" | 40 | 15 (0.59)      | Rd 58 x 1/6" |
| 2"  | 25 | 15 (0.59)      | Rd 65 x 1/6" |
| 2½" | 25 | 15 (0.59)      | Rd 78 x 1/6" |

#### Aseptic screwed NEUMO BioConnect with slotted union nut



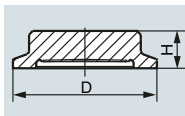
| DN | PN | H<br>mm (inch) | G        |
|----|----|----------------|----------|
| 25 | 16 | 15 (0.59)      | M 42 x 2 |
| 32 | 16 | 15 (0.59)      | M 52 x 2 |
| 40 | 16 | 15 (0.59)      | M 56 x 2 |
| 50 | 16 | 15 (0.59)      | M 68 x 2 |

#### Aseptic screwed NEUMO BioConnect with threaded socket



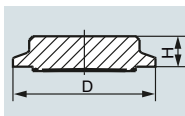
| DN | PN | H<br>mm (inch) | G        |
|----|----|----------------|----------|
| 25 | 16 | 20 (0.79)      | M 42 x 2 |
| 32 | 16 | 20 (0.79)      | M 52 x 2 |
| 40 | 16 | 20 (0.79)      | M 56 x 2 |
| 50 | 16 | 20 (0.79)      | M 68 x 2 |

#### Aseptic screwed NEUMO BioConnect with clamp connection, form R



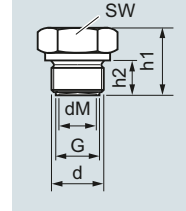
| DN | PN | H<br>mm (inch) | D<br>mm (inch) |
|----|----|----------------|----------------|
| 25 | 40 | 20 (0.79)      | 50.5 (2)       |
| 32 | 40 | 20 (0.79)      | 50.5 (2)       |
| 40 | 40 | 20 (0.79)      | 64 (2.52)      |
| 50 | 25 | 20 (0.79)      | 77.4 (3.05)    |

#### Aseptic screwed NEUMO BioConnect with clamp connection, form V



| DN | PN | H<br>mm (inch) | D<br>mm (inch) |
|----|----|----------------|----------------|
| 25 | 40 | 15 (0.59)      | 50.5 (2)       |
| 32 | 40 | 15 (0.59)      | 50.5 (2)       |
| 40 | 40 | 15 (0.59)      | 64 (2.52)      |
| 50 | 25 | 15 (0.59)      | 77.4 (3.05)    |

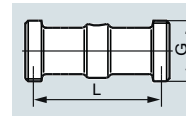
#### Male thread DIN 3852, form A



| G    | d<br>mm<br>(inch) | d <sub>M</sub><br>mm<br>(inch) | h <sub>1</sub><br>mm<br>(inch) | h <sub>2</sub><br>mm<br>(inch) | SW<br>mm<br>(inch) |
|------|-------------------|--------------------------------|--------------------------------|--------------------------------|--------------------|
| G½A  | 26<br>(1.02)      | 17.5<br>(0.69)                 | 27<br>(1.06)                   | 14<br>(0.55)                   | 27<br>(1.06)       |
| G¾A  | 32<br>(1.26)      | 22.6<br>(0.89)                 | 31<br>(1.22)                   | 16<br>(0.63)                   | 32<br>(1.26)       |
| G1A  | 39<br>(1.54)      | 27<br>(1.06)                   | 33<br>(1.30)                   | 18<br>(0.71)                   | 51<br>(2.01)       |
| G1½A | 55<br>(2.17)      | 40<br>(1.57)                   | 40<br>(1.57)                   | 22<br>(0.87)                   | 55<br>(2.17)       |
| G2A  | 68<br>(2.68)      | 51<br>(2.00)                   | 42<br>(1.65)                   | 24<br>(0.94)                   | 70<br>(2.76)       |

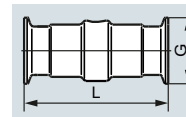
Inline seal (screwed gland at both ends) with quick-release clamps

#### Milk pipe union to DIN 11851 with threaded socket



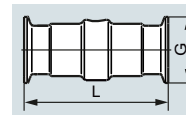
| DN | PN | L<br>mm (inch) | G            |
|----|----|----------------|--------------|
| 25 | 40 | 110 (4.33)     | Rd 52 x 1/6" |
| 32 | 40 | 110 (4.33)     | Rd 58 x 1/6" |
| 40 | 40 | 110 (4.33)     | Rd 65 x 1/6" |
| 50 | 25 | 110 (4.33)     | Rd 78 x 1/6" |
| 65 | 25 | 110 (4.33)     | Rd 95 x 1/6" |

#### Clamp connection to DIN 32676



| DN | PN | L<br>mm (inch) | D<br>mm (inch) |
|----|----|----------------|----------------|
| 25 | 16 | 110 (4.33)     | 50.5 (2)       |
| 32 | 16 | 110 (4.33)     | 50.5 (2)       |
| 40 | 16 | 110 (4.33)     | 50.5 (2)       |
| 50 | 16 | 110 (4.33)     | 64 (2.52)      |
| 65 | 10 | 110 (4.33)     | 91 (3.58)      |

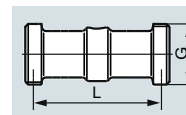
#### Clamp connection to ISO 2852



| DN  | PN | L<br>mm (inch) | D<br>mm (inch) |
|-----|----|----------------|----------------|
| 1"  | 16 | 110 (4.33)     | 50.5 (2)       |
| 1½" | 16 | 110 (4.33)     | 50.5 (2)       |
| 2"  | 16 | 110 (4.33)     | 64 (2.52)      |
| 2½" | 16 | 110 (4.33)     | 91 (3.58)      |

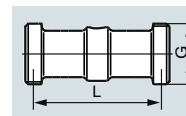
Inline seal with aseptic connection

#### Aseptic screwed gland to DIN 11864-1, form A, with threaded socket



| DN  | PN | L<br>mm (inch) | G            |
|-----|----|----------------|--------------|
| 1"  | 40 | 110 (4.33)     | Rd 52 x 1/6" |
| 1½" | 40 | 110 (4.33)     | Rd 65 x 1/6" |
| 2"  | 25 | 110 (4.33)     | Rd 78 x 1/6" |

#### Aseptic screwed NEUMO BioConnect with threaded socket



| DN | PN | L<br>mm (inch) | G        |
|----|----|----------------|----------|
| 25 | 16 | 110 (4.33)     | M 42 x 2 |
| 32 | 16 | 110 (4.33)     | M 52 x 2 |
| 40 | 16 | 110 (4.33)     | M 56 x 2 |
| 50 | 16 | 110 (4.33)     | M 68 x 2 |
| 65 | 16 | 110 (4.33)     | M 90 x 3 |



## Pressure Measurement

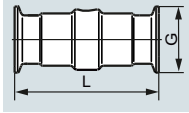
Pressure transmitters

Single-range transmitters for general applications

1

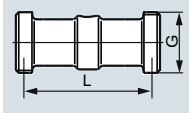
### SITRANS P Compact for gauge and absolute pressure

#### Aseptic screwed NEUMO BioConnect with clamp connection, form R



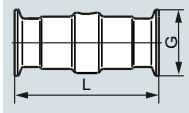
| DN | PN | L<br>mm (inch) | D<br>mm (inch) |
|----|----|----------------|----------------|
| 25 | 16 | 110 (4.33)     | 50.4 (2)       |
| 32 | 16 | 110 (4.33)     | 50.4 (2)       |
| 40 | 16 | 110 (4.33)     | 64 (2.52)      |
| 50 | 16 | 110 (4.33)     | 77.4 (3.05)    |

#### Aseptic screwed gland SÜDMO with threaded socket W 501



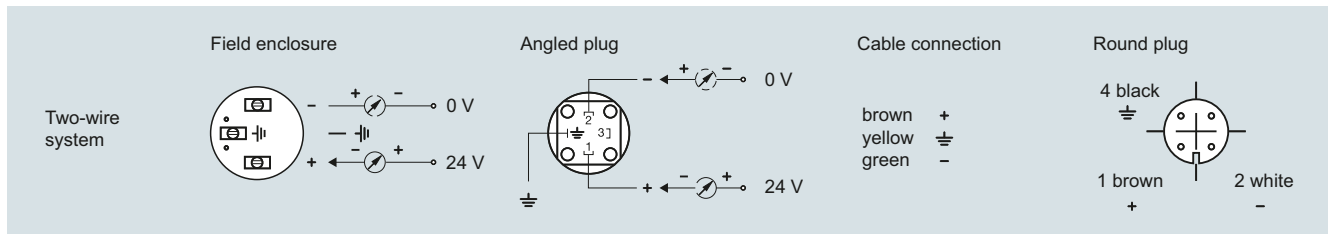
| DN  | PN | L<br>mm (inch) | G            |
|-----|----|----------------|--------------|
| 1"  | 25 | 110 (4.33)     | Rd 44 x 1/6" |
| 1½" | 25 | 110 (4.33)     | Rd 58 x 1/6" |
| 2"  | 20 | 110 (4.33)     | Rd 78 x 1/6" |

#### Aseptic screwed gland SÜDMO with threaded socket W 601



| DN  | PN | L<br>mm (inch) | D<br>mm (inch) |
|-----|----|----------------|----------------|
| 1"  | 16 | 110 (4.33)     | 50.5 (2)       |
| 1½" | 16 | 110 (4.33)     | 64 (2.52)      |
| 2"  | 16 | 110 (4.33)     | 77.5 (3.05)    |

### Schematics



SITRANS P Compact, connection diagram