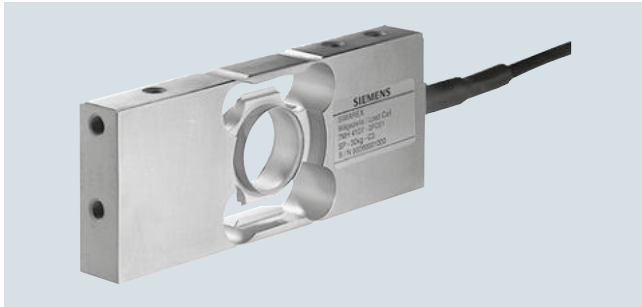


## Overview



The SIWAREX WL260 SP-S SB platform load cell is excellently suited for use in platform scales with dimensions up to and including 350 x 350 mm (13.78 x 13.78 inch). It is approved for use in Class III commercial scales with maximum divisions of  $n_{\max}$  to 3 000d.

## Design

The load cell is made of stainless steel and is hermetically sealed. The load cell meets the IP68 degree of protection.

## Technical specifications

| SIWAREX WL260 SP-S SB                                 |  |
|---|--|
| <b>Possible applications</b>                          | <ul style="list-style-type: none"> <li>Platform scales</li> <li>Small belt scales</li> </ul>   |
| <b>Type of construction</b>                           | Single point load cell   |
| <b>Loads</b>  |  |
| Rated load $E_{\max}$                                 | <ul style="list-style-type: none"> <li>6 kg (13.23 lb)</li> <li>12 kg (26.46 lb)</li> <li>30 kg (66.14 lb)</li> <li>60 kg (132.28 lb)</li> </ul> |
| Minimum initial loading $E_{\min}$                    | 0% $E_{\max}$  |
| Maximum working load $L_u$                            | 150% $E_{\max}$  |
| Breaking load $L_d$                                   | 300% $E_{\max}$  |
| Safe side load $L_{iq}$                               | 100% $E_{\max}$  |
| <b>Measurement characteristic values</b>              |  |
| Deflection $h_n$ at $E_{\max}$                        |  |
| • $E_{\max} = 6$ kg (13.23 lb)                        | 0.24 ± 0.02 mm (0.009 ± 0.0008 in)   |
| • $E_{\max} = 12$ kg (26.46 lb)                       | 0.19 ± 0.01 mm (0.008 ± 0.0004 in)   |
| • $E_{\max} = 30$ kg (66.14 lb)                       | 0.15 ± 0.01 mm (0.006 ± 0.0004 in)   |
| • $E_{\max} = 60$ kg (132.28 lb)                      | 0.22 ± 0.03 mm (0.009 ± 0.0011 in)   |
| Rated characteristic value $C_n$                      | 2.0 ± 0.2 mV/V   |
| Tolerance $D_0$ of zero signal                        | < ± 2.0% $C_n$   |
| Maximum scale interval $n_{ic}$                       | 3 000  |
| Minimum scale interval $V_{\min}$                     | $E_{\max}/15\ 000$   |
| • At $E_{\max} = 6 \dots 60$ kg (13.23 ... 132.28 lb) |  |
| Combined error $F_{\text{comb}}$                      | ≤ ± 0.02% $C_n$  |
| Repeatability $F_v$                                   | ≤ ± 0.02% $C_n$  |
| Creep error $F_{cr}$                                  |  |
| • 30 min  | ≤ ± 0.025% $C_n$   |
| Temperature coefficient                               |  |
| • Zero signal $T_{K0}$                                | 0.009% $C_n/10$ °C (50 °F)   |
| • Characteristic value $T_{Kc}$                       | 0.009% $C_n/10$ °C (50 °F)   |
| <b>Electrical characteristic values</b>               |  |
| Recommended reference voltage $U_{ref}$               | 5 ... 12 V DC  |
| Input resistance $R_e$                                | 400 Ω ± 20 Ω   |
| Output resistance $R_a$                               | 350 Ω ± 3.5 Ω  |
| Insulation resistance $R_{is}$                        | 5 000 MΩ at 50 V DC  |

## SIWAREX WL260 SP-S SB

### Connection and environmental conditions

Sensor material (DIN) Stainless steel EN 1.4542

Maximum tightening torque of the fixing screws 10 Nm

Cable connection

### Function

- EXC + (supply +)
- EXC - (supply -)
- SIG + (measured signal +)
- SIG - (measured signal -)
- Sense + (sensor cable +)
- Sense - (sensor cable -)
- Shield (not connected to the load cell body)

### Color

Green  
Black  
White  
Red  
Yellow  
Blue  
Transparent

Rated temperature range  $B_{Tn}$  -10 ... +40 °C (14 ... 104 °F)

Operating temperature range  $B_{Tu}$  -35 ... +65 °C (-31 ... +149 °F)

Storage temperature range  $B_{Ts}$  -35 ... +65 °C (-31 ... +149 °F)

Degree of protection according to EN 60529; IEC 60529 IP68

### Certificates and approvals

Accuracy class according to OIML R-60

C3

## Selection and ordering data

## Article No.

### Load cell, type WL260 SP-S SB

Legal-for-trade according to OIML R-60 up to 3 000d, connecting cable 6 m (19.69 ft)

7MH5117-

D 0 0

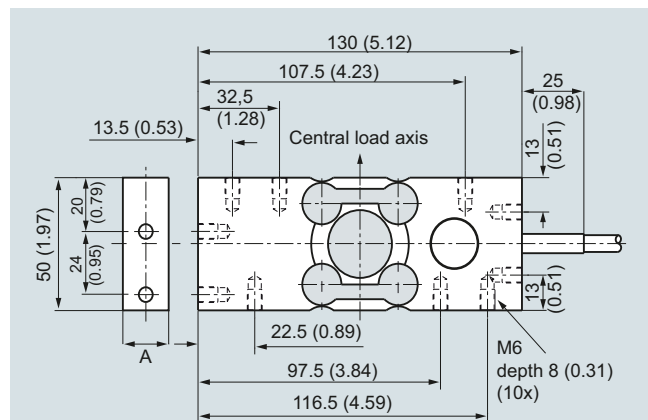
Click on the Article No. for the online configuration in the PIA Life Cycle Portal.

### Rated load

- 6 kg (13.23 lb)
- 12 kg (26.45 lb)
- 30 kg (66.14 lb)
- 60 kg (132.28 lb)

1 Q  
2 B  
2 K  
2 Q

## Dimensional drawings



|                      | 6 (13.23)   | 12 (26.46)  | 30 (66.14)  | 60 (132.28) |
|----------------------|-------------|-------------|-------------|-------------|
| Rated load [kg (lb)] |             |             |             |             |
| A [mm (inch)]        | 18.5 (0.73) | 18.5 (0.73) | 18.5 (0.73) | 23.5 (0.93) |

SIWAREX WL260 SP-S SB load cell, dimensions in mm (inch)