

IP115



Datasheet OEM Pressure Transmitter IP115

PERFORMANCE FEATURES

- Dry ceramic sensor
- Accuracy $\leq 0,5\%$
- Smallest measuring range: 0...100 mbar
- Largest measuring range: 0...300 mbar
- Various electrical connections
- Analog output: 4...20 mA, 2-wires

AREAS OF APPLICATION

- Viscous and pasty media
- Liquid media
- Gaseous media
- Aggressive media
- Bubbling-through method

The model IP115 is an application-optimized transmitter that is especially suitable as an OEM component. Various electrical connection options allow for easy integration. The protection class IP 67 reliably prevents dust and water from entering the device. The ceramic sensor operates according to the piezoresistive principle and in combination with the stainless steel housing forms a robust and compact sensor. Our modular design concept provides a wide variety of products. Feel free to contact us if you need a customization that is not listed in this datasheet.

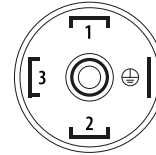
IP115 Datasheet Pressure Transmitter

TECHNICAL DATA

Measuring range	
Pressure range	See table "Measuring ranges" others on request
Output	
Analog output	4...20 mA 2-wires
Power supply	
20 mA output	9...30 V DC
Signal characteristics	
Accuracy	$\leq \pm 0,5 \% \text{ FS @ } 25^\circ \text{C}$
Long term stability	$\leq \pm 0,5 \% \text{ FS/Year}$
Response time	200 ms - others on request
Swich-on time	< 1 s
Temperature coefficient	
Zero	$\leq \pm 0,03 \% \text{ FS/Kelvin}$
Span	$\leq \pm 0,02 \% \text{ FS/Kelvin}$
Temperature ranges	
Medium temperature	-25...100 °C
Surrounding temperature	-25...80 °C
Storage temperature	-40...85 °C
Electrical protections	
Short-circuit resistance	Permanent
Reverse polarity protection	Protection against reverse polarity, but no function
Electromagnetic compatibility	Interference emissions and immunity acc. to EN 61326
Wetted materials	
Process connection	Stainless steel 1.4404
Sensor	Ceramic Al_2O_3
Sensor seal	FPM (Viton), NBR, EPDM, FKKM (Chemraz / Kalrez)
Surroundings	
Protection type	IP 67
Exemplary weight	
IP115-400-G110 (figure p. 1)	Approx. 200 g

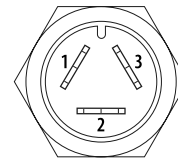
ELECTRICAL CONNECTION

Connector
EN 175301-803A



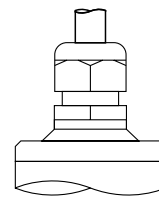
4...20 mA 2-wires
PIN 1: Signal +
PIN 2: Signal -

Quickon-Connector



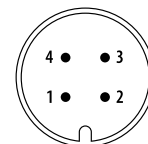
4...20 mA 2-wires
PIN 1: Signal +
PIN 2: Signal -

Cable connection



4...20 mA 2-wires
red: Signal +
black: Signal -

M12 Connector



4...20 mA 2-wires
PIN 1: Signal +
PIN 3: Signal -

LOAD

