

## Pre-assembled cable with M12 x 1 mating connector Model EZE53

WIKA-data sheet AC 50.08

### Applications

- Machine building and plant construction, manufacturing automation
- Crane systems, hoists and offshore
- Mobile working machines
- Industrial weighing technology
- General industrial applications

### Special features

- Reliable electrical connection
- Pre-assembled
- Shielded for high electromagnetic immunity
- Ready for immediate use
- Optional: with knurled nut made from stainless steel



Pre-assembled cable, model EZE53

### Description

The model EZE53 pre-assembled cable is specially suited for the electrical connection of all transmitters.

The pre-assembled cable is available in a variety of variants. With straight or angled mating connectors in 4-pin or 5-pin design on the sensor side. The output side of the cable is cut to length. On request, the model EZE53 is available with a straight or angled M12 x 1 connector on the output side.

The shield of the pre-assembled cable ensures a high resistance against electromagnetic interference. When plugged in, the cable achieves IP67 ingress protection and is thus suitable for use in harsh environments.

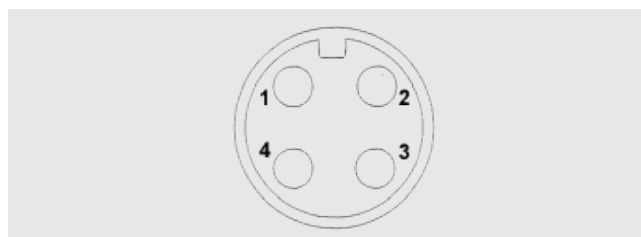
The pre-assembled cable can be ordered with knurled nut in stainless steel for permanent use in demanding outdoor application (e.g. maritime environment).

## Specifications

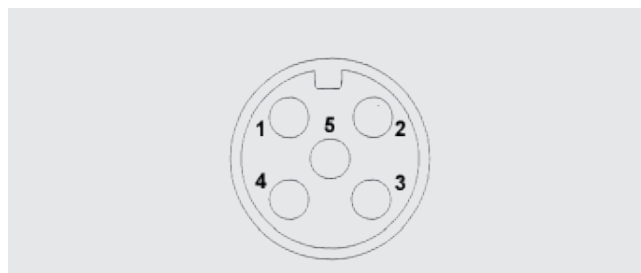
Model EZE53	Basic version	Stainless steel version
<b>Connection type</b>		
Sensor side	Straight or angled M12 x 1 mating connector, A-coding	
Output side	Cut to length	Cut to length
<b>Number of pins</b>	4, 5	4
<b>Shield</b>	Yes	
<b>Contact resistance</b>	≤ 10 mΩ	≤ 5 mΩ
<b>Insulation resistance</b>	≥ 10 <sup>9</sup> Ω	≥ 10 <sup>9</sup> Ω
<b>Current-carrying capacity</b>	≤ 4 A	
<b>Nominal voltage</b>	DC 60 V / AC 50 V	
<b>Wire colours</b>	1: Brown / 2: White / 3: Blue / 4: Black / 5: Grey	
<b>Material</b>		
Cable sheath	PUR	
Knurled nut	CuZn, nickel-plated	Stainless steel
<b>Temperature range</b>		
Fixed in place	-40 ... +80 °C	-40 ... +90 °C
Moveable	-25 ... +80 °C	-30 ... +90 °C
<b>Bending radius</b>		
Fixed in place	> 5 x cable diameter	
Moveable	> 10 x cable diameter	> 12 x cable diameter
<b>Mating cycles</b>	≤ 100	> 100
<b>Cable length</b>	2, 5, 10 m	5, 10, 15, 20 m Others on request
<b>Cable diameter</b>	4-pin: 5.50 mm 5-pin: 5.85 mm	5.10 mm
<b>Wire cross-section</b>	0.34 mm <sup>2</sup>	

## Pin assignment

Mating connector M12 x 1, 4-pin	
1	Brown
2	White
3	Blue
4	Black
<b>Knurled nut</b>	Shield

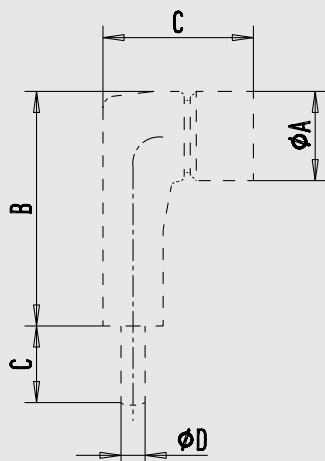


Mating connector M12 x 1, 5-pin	
1	Brown
2	White
3	Blue
4	Black
5	Grey
<b>Knurled nut</b>	Shield

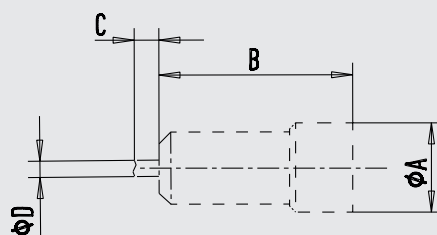


## Dimensions in mm / [in]

Angled M12 x 1 mating connector



Straight M12 x 1 mating connector



Description	Dimensions in mm / [in]			
	A	B	C	D
<b>Straight coupling - standard</b>	14.5 [0.57]	43 [1.69]	-	See cable diameter
<b>Angled coupling - standard</b>	14.5 [0.57]	31 [1.22]	28.35 [1.12]	See cable diameter
<b>Straight coupling - V4A</b>	15 [0.59]	45.7 [1.79]	-	See cable diameter
<b>Angled coupling - V4A</b>	15 [0.59]	37.5 [1.47]	28.7 [1.13]	See cable diameter

## Ordering information

Designation	Order number				
	With 2 m cable	With 5 m cable	With 10 m cable	With 15 m cable	With 20 m cable
<b>4-pin mating connector M12 x 1 – basic version</b>					
Straight	14259451	14259453	14259454	-	-
Angled	14259452	14293481	14259455	-	-
<b>5-pin mating connector M12 x 1 – basic version</b>					
Straight	14259458	79100672	14259472	-	-
Angled	79101493	79100686	11009969	-	-
<b>4-pin mating connector M12 x 1 – stainless steel version</b>					
Straight	-	79101522	79101523	79101524	79101525
Angled	-	79101520	79101521	79101518	79101519

© 07/2021 WIKA Alexander Wiegand SE & Co. KG, all rights reserved.  
 The specifications given in this document represent the state of engineering at the time of publishing.  
 We reserve the right to make modifications to the specifications and materials.

Your WIKA Sales Partner



**ICS Schneider Messtechnik GmbH**  
 Briesestrasse 59  
 D-16562 Hohen Neuendorf / OT Bergfelde  
 Tel.: +49 3303 5040-66  
 Fax: +49 3303 5040-68  
 E-Mail: [info@ics-schneider.de](mailto:info@ics-schneider.de)



**WIKAL Alexander Wiegand SE & Co. KG**  
 Alexander-Wiegand-Straße 30  
 63911 Klingenberg/Germany  
 Tel. +49 9372 132-0  
 Fax +49 9372 132-406  
[info@wika.de](mailto:info@wika.de)  
[www.wika.de](http://www.wika.de)