

AGM50 Model

The AGM50, our hand-held Gas Leak Detector, specifically designed for **HVAC applications** is a 'must' in any heating engineer's tool kit. It pinpoints flammable gas leaks in residential and commercial applications and also verifies that the work undertaken is leak free.



AGM50 Model

General Specification

Sensitive to:	Methane, Propane, Natural Gas, Butane & others*
Power Supply:	9v Alkaline Battery
Sensitivity:	10 ppm Methane
Warm up:	Approx 1 minute
Response time:	Instantaneous
Size:	3.0" x 6.5" x 1.5" (77 x 170 x 40) mm
Weight:	1.lb (450g)
Probe Length:	16" (406mm)

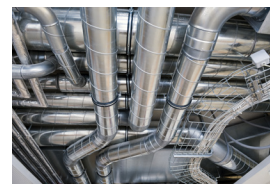
For other options, please contact us digitronsales@rototherm.co.uk or +44 (0)1656 740551

Key Features and Benefits

- Simple, adjustable 'tic rate' increases as the sensor tip approaches a leak
- Audible and visual 'tic-rate', fully adjustable
- Long 400mm gooseneck for remote access
- 'LED-Light' illuminates the tip sensing area
- High sensitivity provides accurate detection
- Rubber boot protects instrument

Main Applications

A **world leader** in digital detectors, Rototherm has become the standard for accurate and reliable measurement across the following industries:



Technical Certification

- Instrument & Probe Calibration Certificate

Export Documentation

- Certificate of Origin
- EUR1
- ATR

Calibration and After-Sales Support

- Fully trained field service personnel
- Use of UKAS certified calibration equipment
- 5 day turnaround
- Fixed pricing
- Approved manufacturer parts
- Full post-service reports
- 12 month warranty



ISO9001:2015
FM11958