

GX1 SERIES

Ultra High Resolution. More Efficient Inspection



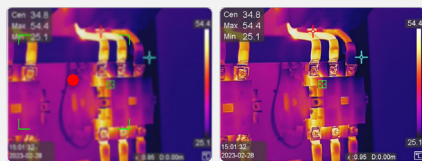
Ultra High Resolution

A highly sensitive VOx detector with 640 x 480 (307,200 pixels) IR resolution, provides a distinct thermal vision of the target.



5 Quick Focus Modes

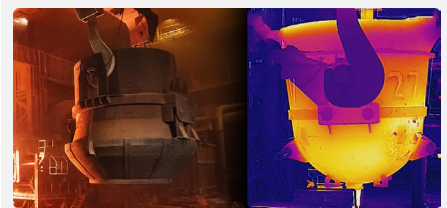
Support for 5 focus modes and a fast focus speed of 2 seconds help save time by providing sharper images for more accurate temperature measurements.



Continuous Autofocus Autofocus Laser Assisted Focus Touch AF Touch AF

Up to 2000°C Temperature Range

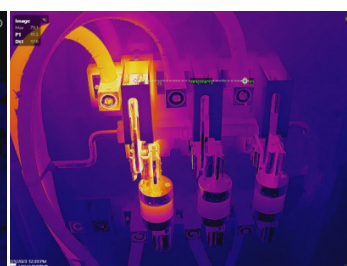
With a measurement range of up to 2000°C (3992°F), it can handle industrial furnace applications, refractory, and inspecting tools/ fixtures in metal smelting at these extreme temperatures. (*G41H/G61H only)



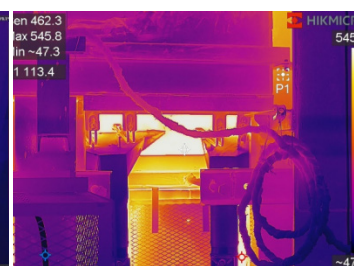
APPLICATIONS



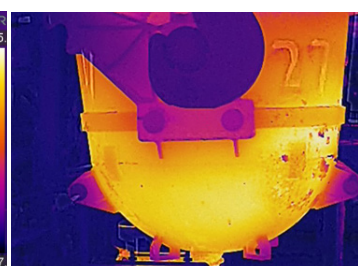
Electric Utilities



Facility Maintenance



Factory



Kilns

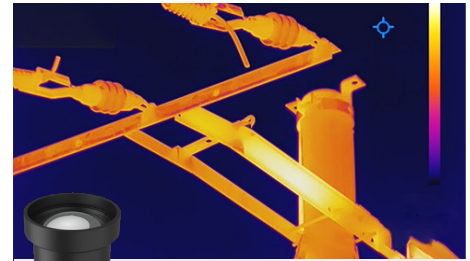
ADD-ON LENSES



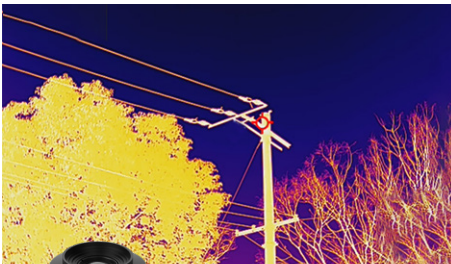
Wide Angle 0.5X
HM-G605-LENS1



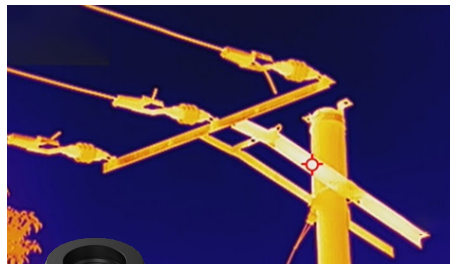
Telephoto 2X
HM-G620-LENS1



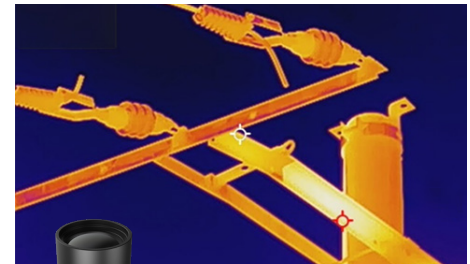
Telephoto 3.3X
HM-G630-LENS1



Wide Angle 0.5X
HM-G305-LENS1



Telephoto 2X
HM-G320-LENS1



Telephoto 3.3X
HM-G330-LENS1

WHAT'S IN THE BOX



- Handheld Thermography Camera
- 64GB Micro SD card
- Rechargeable Battery (x3)
- Charging Base
- Power Adapter
- International Use Plugs (US/EU/UK/AU) for Power Supply (x4)
- USB Cable
- CVBS Patch Cord
- Lens Cover
- Hand Strap
- Accessory Bag
- User Manual
- Calibration Certificate
- Quick Start Guide
- Packing List
- Carrying Case

Model No		G31	G41	G41H	G61	G61H
Infrared Image	IR Resolution	384 x 288	480 x 360	480 x 360	640 x 480	640 x 480
	SuperIR	768 x 576	960 x 720	960 x 720	1280 x 960	1280 x 960
	NETD	< 35 mK (@ 25 °C, F#=1.0)				
	Image Frequency	50 Hz				
	Field of View (FOV)	25° x 19°	18.7° x 14°	18.7° x 14°	25° x 19°	25° x 19°
	Spatial Resolution (IFOV)	1.13 mrad	0.68 mrad	0.68 mrad	0.68 mrad	0.68 mrad
	Focus Speed	Approx. 2 second				
Image Display	Visual Camera	3264 x 2448 (8 MP)				
Measurement and Analysis	Object Temperature Range	-20 °C to 650 °C (-4 °F to 1202 °F)	-20 °C to 650 °C (-4 °F to 1202 °F)	-20 °C to 2000 °C (-4 °F to 3632 °F)	-20 °C to 650 °C (-4 °F to 1202 °F)	-20 °C to 2000 °C (-4 °F to 3632 °F)
	Accuracy	Max (±2°C/3.6°F, ±2%)				
General	Image and Video Formats	JPEG, MP4				
	Wi-Fi	802.11 b/g/n (2.4 GHz and 5 GHz)				
	HDMI Interface	Yes				
	GPS & Compass	Yes				
	Battery Operating Time	Approx. 4 hours				

HIKMICRO Thermography

info@hikmicrotech.com

hikmicro_thermography

support@hikmicrotech.com

HIKMICRO Thermography

HIKMICRO

