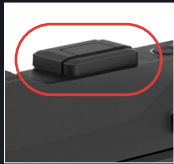


SP SERIES

Ultra-high performance inspection and reporting thermography camera



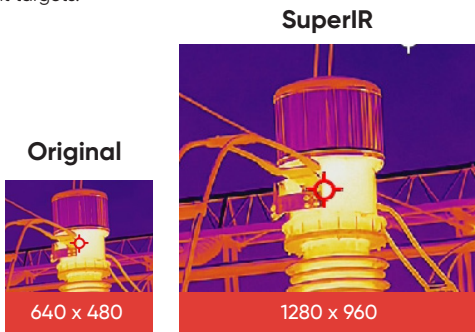
SP40, SP40H
without viewfinder

SuperIR™



SuperIR

With HIKMICRO SuperIR, SP series cameras with 640 x 480 resolution detectors can capture ultra-sharp images with 4X pixels (1280 x 960), improving image quality, and allowing for more detailed analysis on smaller or distant targets.



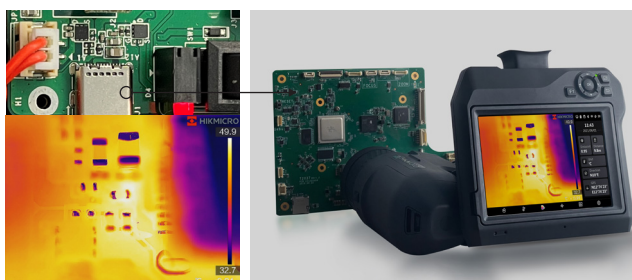
Flexible Rotating Lens and Screen

The 90° rotating screen and the 180° rotating lens design help to easily view the area around, between, above, or below the target.



Detect Tiny Faults

See details as small as 20µm with a macro lens, allowing you to take accurate temperature readings on small objects, such as components on printed circuit boards or assemblies.



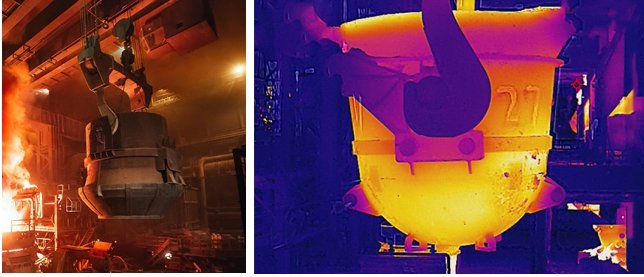
One-second Fast Focusing

Supports 5 types of focus modes (Laser Assisted AF, Continuous AF, AF, Manual Focus, Touch AF) and one-second fast focusing speed helps to save time by giving sharper images, resulting in more accurate temperature measurements.



SPxx H Series- Ultra High Temperature Range

With a measurement range of up to 2200°C (3992°F), the "H" series can handle industrial furnace applications, refractory, and inspecting tools/fixtures in metal smelting at these extreme temperatures.



Designed for Outdoors

Features IP54 rugged housing, 1024 x 768 OLED electronic viewfinder*, and auto-brightness 5" color LCD touch display make it easy to conduct outdoor inspections under bright, challenging light and tough conditions. (*SP60H, SP60 only)



CAMERA FEATURES



Multiple Image Annotations

Add 60-second voice clips or 200 text characters notes to your images for later review and reminders. The camera automatically adds GPS and compass directions for geolocation location and orientation.



Multiple Image Modes

Thermal, Fusion, PIP and Optical modes to suit your preferred view.



Simplify Inspection Process

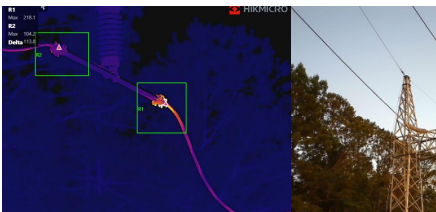
Using the included HIKMICRO Inspector PC Software, you can simplify the inspection process by pre-planning your inspection routes, downloading them directly to the camera, and guide you from location to location while collecting imagery at each station.



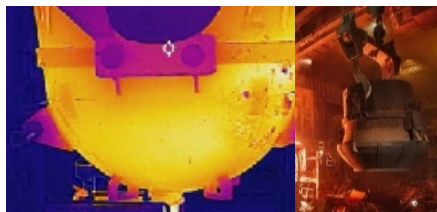
Radiometric Images and Video Analysis

Supports recording of radiometric images and video to the onboard SD card, for post analysis on your PC and the no charge HIKMICRO analyzer software.

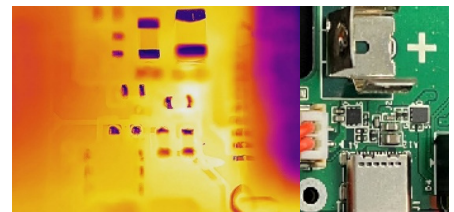
APPLICATIONS



Utility Inspection



Industrial Inspection

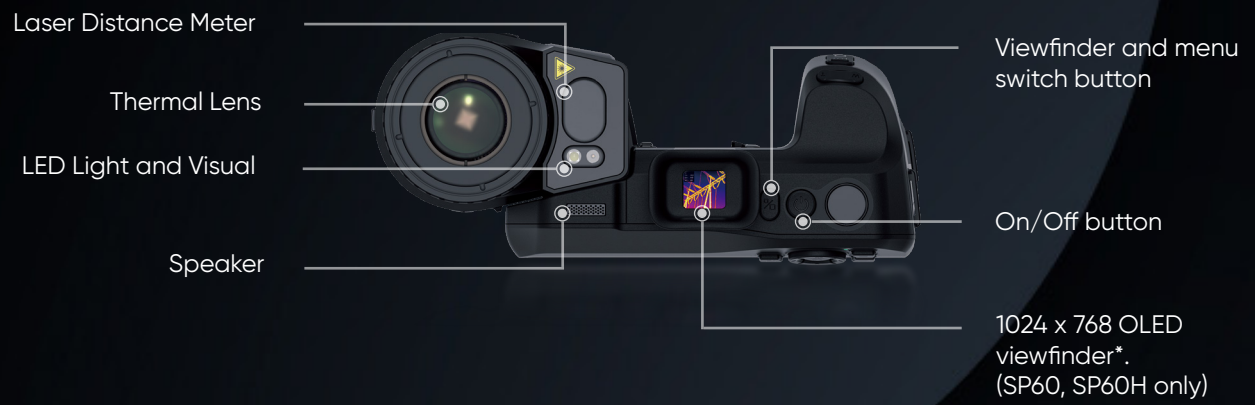


Electronic Testing






WHAT'S IN THE BOX






- Thermal Imager
- Hand Strap
- Neck Strap
- Rubber Viewfinder Cap
- Camera Lens Caps
- Interchange and Rechargeable Li-ion Batteries (x2)
- Power Supply for Battery Charger
- Two-bay Battery Charger
- International Use Plugs (US/EU/UK/AU) for Power Supply (x4)
- USB 2.0 A to USB Type-C Cable
- Mini HDMI to HDMI Cable
- USB Type-C Cable to USB Type-C Cable
- Hard Carrying Case
- Calibration Certificate
- Quick Start Guide
- 64GB SD card
- Lenses (according to the ordering model)



OPTIONAL ACCESSORIES

<p>HM-SP630-LENS 3X Ultra Telephoto Lens 77.4mm</p>  <p>SP40/SP40H: 6°(H) x 4.5°(V) SP60/SP60H: 8°(H) x 6°(V)</p>	<p>HM-SP620-LENS 2X Telephoto Lens 51.4 mm</p>  <p>SP40/SP40H: 9°(H) x 6.8°(V) SP60/SP60H: 12°(H) x 9°(V)</p>	<p>HM-SP610-LENS 1X Standard Telephoto Lens 25 mm</p>  <p>SP40/SP40H: 18.7°(H) x 14°(V) SP60/SP60H: 24.8°(H) x 18.7°(V)</p>	<p>HM-SP605-LENS 0.5X Wide Angle Lens 12.6 mm</p>  <p>SP40/SP40H: 37.3°(H) x 27.8°(V) SP60/SP60H: 50°(H) x 37.3°(V)</p>	<p>HM-SP620-MACRO 20µm Macro Lens 20µm minimum imaging target size 3cm focusing distance</p>  <p>SP40/SP40H: 4.95°(H) x 3.74°(V) SP60/SP60H: 12.9°(H) x 10°(V)</p>
---	---	---	---	--

Note: Lenses are factory calibrated for temperature with the camera when purchased. If lenses are purchased separately at a later date, the camera and lens will need to be temperature calibrated (if desired) at a calibration center.

<p>HM-20322ZC</p> <ul style="list-style-type: none"> Replacement Power Supply for Battery Charger Two-bay Battery Charger International Use Plugs (US/EU/UK/AU) for Power Supply (x4) 	<p>HM-7250DC</p> <ul style="list-style-type: none"> Additional Interchange and Rechargeable Li-ion Battery 	<p>HM-SP01-POUCH</p> <ul style="list-style-type: none"> M/G/SP Series Pouch 
--	---	--

Model No		SP40	SP40H	SP60	SP60H
Infrared Image	IR Resolution	480 × 360 (172,800 pixels)		640 × 480 (307,200 pixels)	
	SuperIR	960 × 720 (691,200 pixels)		1280 × 960 (1,228,800 pixels)	
	NETD	< 30 mK (@ 25 °C, F#=1.0)			
	Image Frequency	25 Hz			
	Field of View (FOV)	SP40/SP40H: L6: 6° × 4.5°; L9: 9° × 6.8°; L19: 18.7° × 14°; L37: 37.3° × 27.8° SP60/SP60H: L8: 8° × 6°; L12: 12° × 9°; L25: 24.8° × 18.7°; L50: 50° × 37.3°			
	Focus Mode	Laser Assisted AF/Continuous AF/AF/Manual Focus/Touch AF			
Image Display	Visual Camera	3264 × 2448 (8 MP)			
	Display	1280 × 720 Resolution, 5" LCD Touch Screen			
	Viewfinder	N/A		1024 × 768 pixels OLED	
Measurement and Analysis	Object Temperature Range	-20°C to 650°C (-4°F to 1202°F)	-40°C to 2200°C (-40°F to 3992°F)	-20°C to 650°C (-4°F to 1202°F)	-40°C to 2200°C (-40°F to 3992°F)
	Accuracy	SP60/SP40: Max. (± 2°C/3.6°F, ± 2%); SP60H/SP40H: ±1°C (±1.8°F): 0 to 100°C (32 to 212°F); ±1%: 100 to 150°C (212 to 302°F); ±2°C (±3.6°F): -40 to 0°C (-40 to 32°F); ±2%: 150 to 2200°C (302 to 3992°F)			
General	Wi-Fi	802.11 b/g/n (2.4 GHz and 5 GHz)			

