

Digitron™

Digital Thermometers 2000 Series

Built for speed, accuracy and performance at an affordable price, the robust 2000 series of hand-held digital thermometers provides a range of enhanced features to meet the changing demands of both industrial and food environments.

The rugged 2000 Series provides precise, stable readings and high accuracy even in the harshest of environments. They are simple to operate, fast, reliable and built to last. All models are now supplied with a rubber boot.

General Specification

Resolution:	0.1° from -199.9°C to +199.9°C -199.9°F to +392.0°F 1°C elsewhere
Ambient Operating Temperature:	-10°C to +50°C/+14°F to +122°F (ambient)
Battery Type:	Two AA or equivalent cells (not supplied)
Battery Life:	Typically 500 hours
Low Battery Check:	Symbol appears on display
Display:	12.7mm / 0.5" custom L.C.D.
Sensor Open Circuit:	Indicated by 'O-C' on display
Overrange/Underrange:	'Out' displayed
Cold Junction Compensation:	Yes
Environmental Specifications:	IP65 (IP67 optional)
Auto Switch-Off Time:	12 minutes
Dimensions:	155 x 67 x 40mm/6.1 x 2.6 x 1.6"
Weight:	180g/6.4oz



2000T Model.
Probe ordered
seperately

Key Features and Benefits

- Long battery life – typically 500 hours
- Accurate performance – 0.2% of reading
- Robust Case – Ensuring long life in demanding and harsh environments
- Selectable auto switch-off – saves on operational costs
- Automatic zero calibration – for added accuracy

Optional Extras

- 2000BT – Protective Rubber Sleeve
- Carry Case
- Various Probe Options
- Calibration Certificate

Main Applications

A world leader in digital thermometers, Rototherm has become the standard for accurate and reliable measurement across the following industries:



Industrial



Food & Beverage

Model Specification

Model Options	2000T-K (Refer to IEC 60584)	2024T-RTD (Refer to IEC 751)
Sensor Type	K	Pt100
Connector Type	2 pin mini	TCM screw
°C/°F Function*		•
Hold Function	•	•
Range Lock		•
Max/Min		•
Averaging		•
Differential Input		

Instrument	2000T-K	0.1% rdg $\pm 0.2^{\circ}\text{C}/0.4^{\circ}\text{F}$ above $-100^{\circ}\text{C}/-148^{\circ}\text{F}$ 0.5% rdg $\pm 0.2^{\circ}\text{C}/0.4^{\circ}\text{F}$ below $-100^{\circ}\text{C}/-148^{\circ}\text{F}$	
Accuracies (All ± 1 Digit)			
(Excluding probe error)	2024T-RTD	$\pm 0.2\%$ rdg $\pm 0.1^{\circ}\text{C}/0.2^{\circ}\text{F}$ over range -150°C to $+600^{\circ}\text{C}/-238^{\circ}\text{F}$ to $+1112^{\circ}\text{F}$	
Range	2000T-K	-200°C to $+1350^{\circ}\text{C}/-328^{\circ}\text{F}$ to $+2462^{\circ}\text{F}$	2029T T -200°C to $+350^{\circ}\text{C}/328^{\circ}\text{F}$ to $+662^{\circ}\text{F}$
	2024T-RTD	-196°C to $+600^{\circ}\text{C}/-384.8^{\circ}\text{F}$ to $+1112^{\circ}\text{F}$	2029T N -200°C to $+1300^{\circ}\text{C}/328^{\circ}\text{F}$ to $+2372^{\circ}\text{F}$

Export Documentation

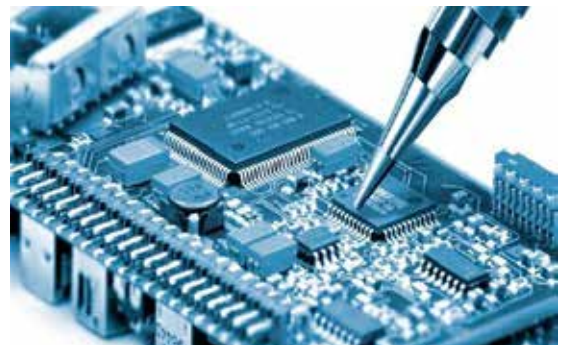
- Certificate of Origin
- EUR1
- ATR

Calibration and After-Sales Support

- Fully trained field service personnel
- Use of UKAS certified calibration equipment
- 5 day turnaround
- Fixed pricing
- Approved manufacturer parts
- Full post-service reports
- 12 month warranty



ISO9001:2015
FM11958



For more information, please contact our service team
digitronservice@rototherm.co.uk